

METAL BUILDING PROCUREMENT FOR THE PUBLIC WORKS FACILITIES SANTAQUIN CITY

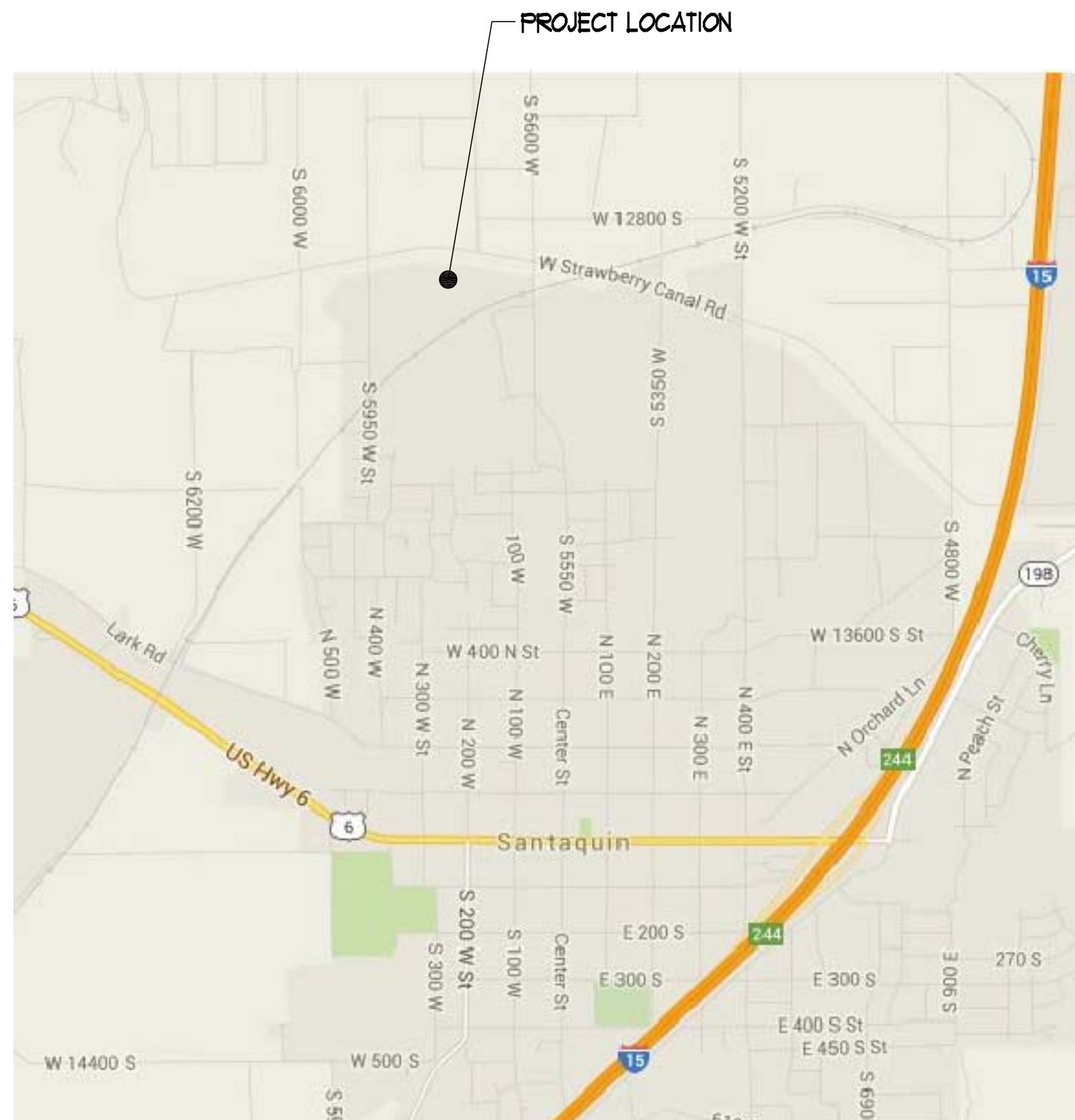
1215 NORTH CENTER STREET

SANTAQUIN, UTAH

ARCHITECT



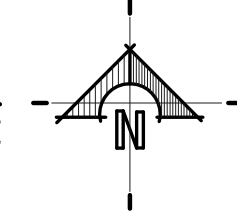
475 NORTH FREEDOM BOULEVARD
PROVO, UTAH 84601
TEL: 801-374-0800
FAX: 801-374-0805



LOCATION MAP

SANTAQUIN UTAH

NOT TO SCALE



CODE ANALYSIS

APPLICABLE CODES

2012 INTERNATIONAL BUILDING CODE (IBC)	2012 INTERNATIONAL FIRE CODE
2012 INTERNATIONAL PLUMBING CODE	2012 INTERNATIONAL ENERGY CONSERVATION CODE
2012 INTERNATIONAL MECHANICAL CODE	2012 INTERNATIONAL FUEL GAS CODE
2011 NATIONAL ELECTRICAL CODE	

OCCUPANCIES AND TYPE OF CONSTRUCTION

OCCUPANCIES	B & S-1
CONSTRUCTION TYPES	VB

AREA OF BUILDING

ACTUAL AREA BREAKDOWN BY LEVEL	TOTAL FINISHED AREA
MAIN LEVEL	13,600 SQ. FT.

ACTUAL AREA BREAKDOWN BY OCCUPANCY

LOCATION:	B	S-1	AREA
MAIN LEVEL	2,122 SQ. FT.	11,478 SQ. FT.	13,600 SQ. FT.

ALLOWABLE BUILDING AREA

B OCCUPANCY: 9,000 SQ. FT. (ALLOWABLE AREA PER FLOOR)

AREA CALCULATIONS

ACTUAL AREA BREAKDOWN BY OCCUPANCY (IBC SECTION 506)
B OCCUPANCY: AREA INCREASE DUE TO FRONTAGE = $(500' / 500') \cdot 0.25 \times 30 / 30 = 0.75$
 $A_a = 9,000 \cdot (9,000 \times 0.75) + (9,000 \times 0) + 15,150 \text{ SQ. FT. (ALLOWABLE AREA PER FLOOR)}$

HEIGHT OF BUILDING

BASIC ALLOWABLE NUMBER OF STORIES (TABLE 503)	2
ACTUAL NUMBER OF STORIES (SECTION 502)	1
BASIC ALLOWABLE HEIGHT IN FEET (TABLE 503)	40
ACTUAL MAXIMUM HEIGHT OF BUILDING IN FEET	38

FIRE RATED CONSTRUCTION

BUILDING ELEMENT	RATING	CODE REFERENCE
FIRE WALLS	NOT REQUIRED	(SECTION 106)
NON SEPERATED OCCUPANCY	N/A	(SECTION 508.3)
FIRE RATED CORRIDORS	N/A	(TABLE 1010.1)
SHAFT ENCLOSURES	NOT REQUIRED	(SECTION 713)
VERTICAL EXIT ENCLOSURES	NOT REQUIRED	(SECTION 1022.1)
STRUCTURAL FRAME PROTECTION	0	(TABLE 601)
BEARING WALLS, EXTERIOR	0	(TABLE 601)
BEARING WALLS, INTERIOR	0	(TABLE 601)
NON-BEARING WALLS, EXTERIOR	0	(TABLE 602)
NON-BEARING WALLS, INTERIOR	0	(TABLE 602)
FLOOR CONSTRUCTION	0	(TABLE 601)
ROOF CONSTRUCTION	0	(TABLE 601)
MECHANICAL ROOM SEPARATION	0	(TABLE 509)
PROTECTION OF EXTERIOR OPENINGS DUE TO FIRE SEPARATION DISTANCE	0	(SECTION 105.8)
FIRE SPRINKLER SYSTEM	YES THROUGHOUT	(CHAPTER 9)

DRAWING INDEX

GENERAL

G1	COVER SHEET, PROJECT INFORMATION
----	----------------------------------

ARCHITECTURAL

A1	SITE PLAN
A21	PUBLIC WORKS MAIN FLOOR PLAN
A22	PUBLIC WORKS MEZZANINE FLOOR PLAN
A23	STORAGE BLDGS. FLOOR PLANS
A41	PUBLIC WORKS EXTERIOR ELEVATIONS
A42	STORAGE BLDGS. EXTERIOR ELEVATIONS
A51	PUBLIC WORKS BUILDING SECTIONS
A53	STORAGE UNITS AND SALT STORAGE BUILDING SECTIONS

DESIGN CRITERIA

ROOF LIVE LOAD:	20 PSF
ROOF SNOW LOAD:	30 PSF
WIND SPEED:	115 PSF (ULTIMATE)
EXPOSURE:	C
SEISMIC RISK CATEGORY:	II

PROCUREMENT NOTES

- THE SCOPE OF THE PROJECT IN THESE DOCUMENTS IS THE PURCHASE OF PRE-ENGINEERED METAL BUILDING SYSTEMS AS SHOWN ON THE DRAWINGS AND INDICATED IN THE SPECIFICATIONS.
- THE METAL BUILDING SYSTEMS WILL BE PURCHASED BY SANTAQUIN CITY AND ERECTED BY A SEPARATE CONTRACT WITH THE CITY'S SELECTED CONSTRUCTION MANAGER / GENERAL CONTRACTOR (CMGC) AS PART OF THE OVERALL PROJECT TO CONSTRUCT THE CITY'S PUBLIC WORKS FACILITIES.
- THE DRAWINGS HEREIN ARE PART OF A 'PROGRESS SET' OF DRAWINGS FOR THE OVERALL PROJECT AND MAY REFERENCE ITEMS THAT WILL BE FURNISHED AND INSTALLED BY THE CMGC.

METAL BUILDING PROCUREMENT PHASE

June 10, 2015

These plans, drawings, and designs are the exclusive property of WPA Architecture and shall not be reproduced in any form without written consent. All rights reserved.

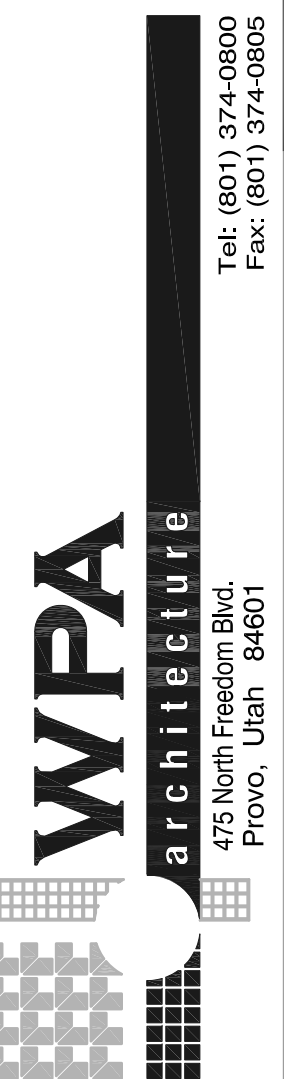
Date: June 10, 2015

Revision: -

Alan R. Poulson

Ronald B. Jones

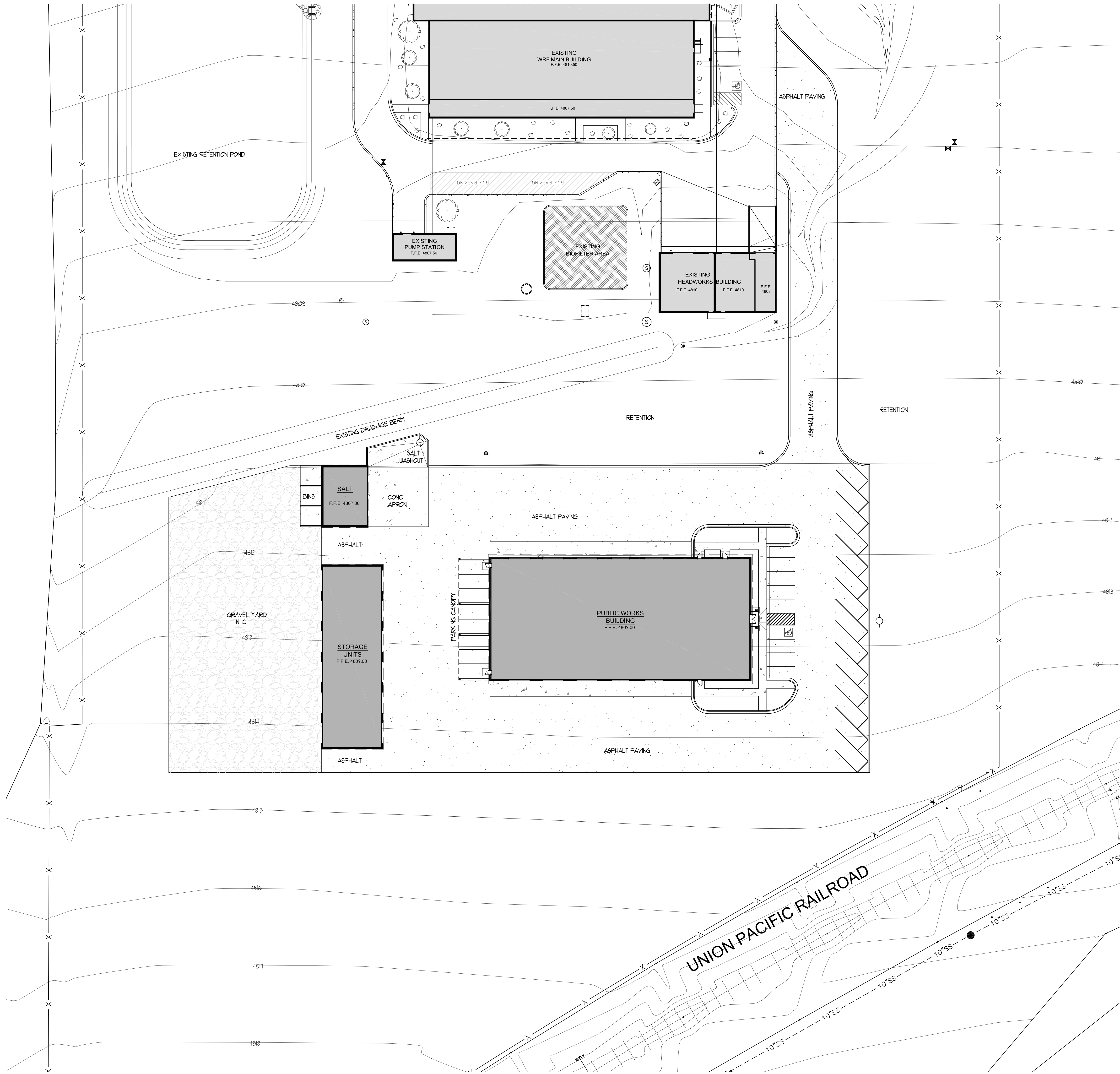
Bruce T. Fallon



SANTAQUIN CITY
PUBLIC WORKS FACILITIES
1215 NORTH CENTER STREET
SANTAQUIN, UTAH 84655

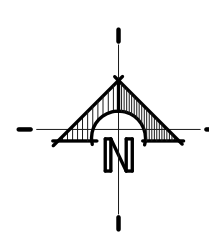


G1.1



SITE PLAN

1" = 30'-0"



A1.1



SANTAQUIN CITY
PUBLIC WORKS FACILITIES
1215 NORTH CENTER STREET SANTAQUIN, UTAH 84655



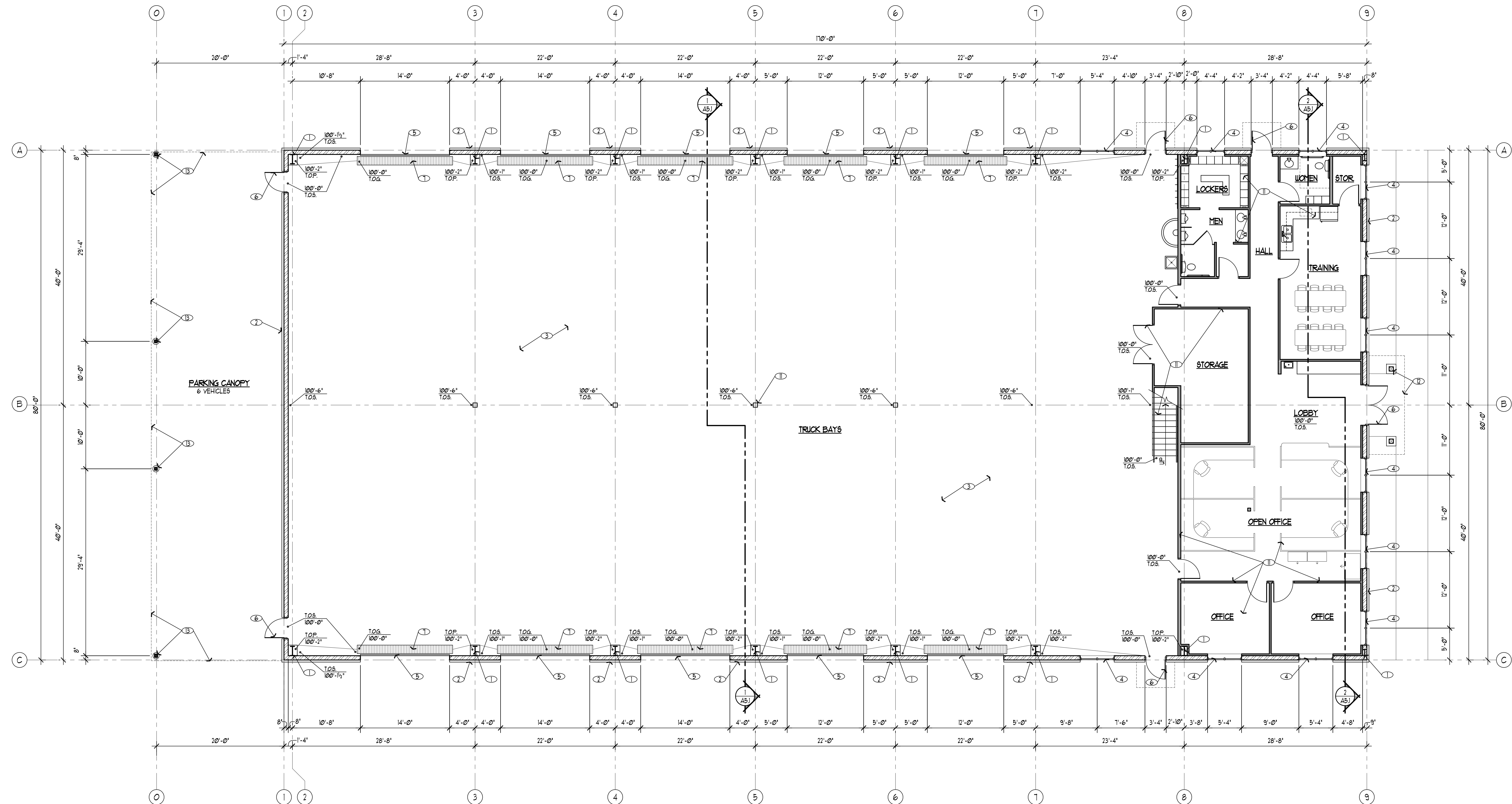
Tel: (801) 374-0800
Fax: (801) 374-0805

Alan R. Poulson
Ronald B. Jones
Bruce T. Fallon

Date: June 10, 2015

Revision:

These plan, drawings and designs are the exclusive property of WPA Architecture and shall not be reproduced in any form without written consent. All rights reserved.



MAIN FLOOR PLAN

1/8"=1'-0"

SHEET NOTES

- 1 STEEL STRUCTURE PROVIDED BY METAL BUILDING MANUFACTURER, TYP.
- 2 PRE-FINISHED METAL WALL PANELS W/ 4" THICK INSULATED CORE PROVIDED BY METAL BUILDING MANUFACTURER, TYP.
- 3 6" THICK REINFORCED CONCRETE SLAB OVER GRAVEL WITH CLEAR SEALER, BY G.C.
- 4 WINDOW, PROVIDED BY G.C.
- 5 STEEL SECTIONAL OVERHEAD DOOR, PROVIDED BY G.C.
- 6 DOOR, PROVIDED BY G.C.
- 7 TRENCH DRAIN, BY G.C.
- 8 LOCATION FOR FIRE SPRINKLER RISER
- 9 WATER HEATER, BY G.C.
- 10 FURNACE BY G.C.
- 11 INTERIOR WALLS, DOORS, MEZZANINE STRUCTURE, STAIRS, RAILINGS, MILLWORK, EQUIPMENT, FINISHES, ETC. BY G.C.
- 12 WOOD FRAMED ENTRANCE CANOPY WITH WOOD SHEATHED ROOF DECK BY G.C. PRE-FINISHED PBR METAL ROOFING PANELS TO BE FURNISHED BY METAL BUILDING MANUFACTURER
- 13 PARKING CANOPY WITH PRIMED STEEL STRUCTURE AND PREFINISHED, UN-INSULATED METAL ROOF PANELS BY METAL BUILDING MANUFACTURER. THE STRUCTURE WILL BE PAINTED BY THE G.C.

These plans, drawings, and designs are the exclusive property of WPA Architecture and shall not be reproduced in any form without written consent. All rights reserved.

Date: June 10, 2015
Revision: -

Alan R. Poulson
Ronald B. Jones
Bruce T. Fallon

WPA
architecture

475 North Freedom Blvd.
Provo, Utah 84601
Tel: (801) 374-0800
Fax: (801) 374-0805

SANTAQUIN CITY
PUBLIC WORKS FACILITIES

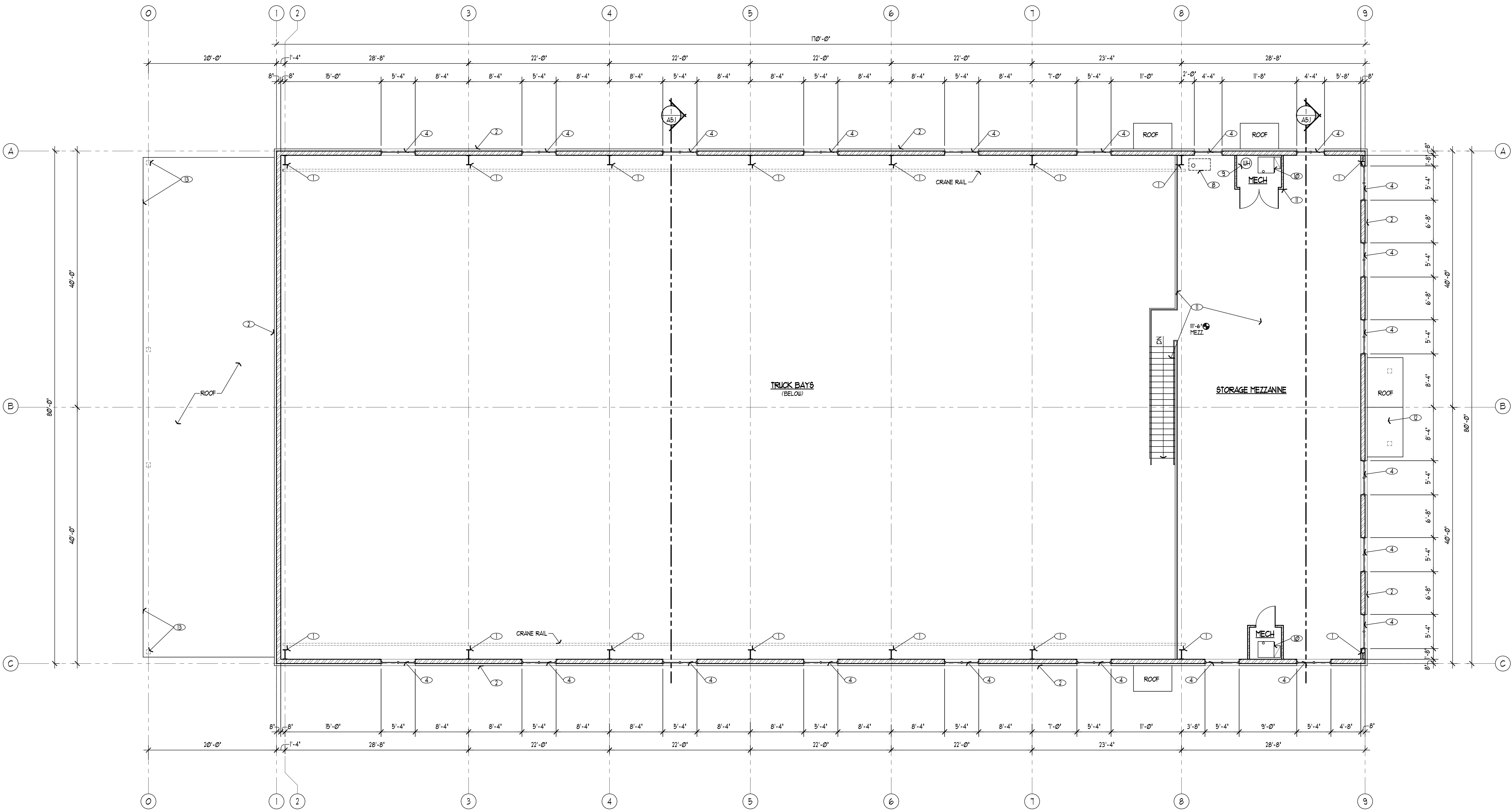
1215 NORTH CENTER STREET
SANTAQUIN, UTAH 84655

Santaquin
A Breath of Fresh Air

A2.1

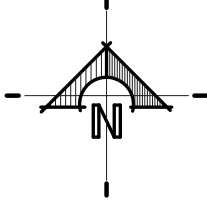
SHEET NOTES

- ① STEEL STRUCTURE PROVIDED BY METAL BUILDING MANUFACTURER, TYP.
- ② PRE-FINISHED METAL WALL PANELS W/ 4" THICK INSULATED CORE PROVIDED BY METAL BUILDING MANUFACTURER, TYP.
- ③ 6" THICK REINFORCED CONCRETE SLAB OVER GRAVEL WITH CLEAR SEALER, BY G.C.
- ④ WINDOW, PROVIDED BY G.C.
- ⑤ STEEL SECTIONAL OVERHEAD DOOR, PROVIDED BY G.C.
- ⑥ DOOR PROVIDED BY G.C.
- ⑦ TRENCH DRAIN, BY G.C.
- ⑧ LOCATION FOR FIRE SPRINKLER RISER
- ⑨ WATER HEATER, BY G.C.
- ⑩ FURNACE BY G.C.
- ⑪ INTERIOR WALLS, DOORS, MEZZANINE STRUCTURE, STAIRS, RAILINGS, MILLWORK, EQUIPMENT, FINISHES, ETC. BY G.C.
- ⑫ WOOD FRAMED ENTRANCE CANOPY WITH WOOD SHEATHED ROOF DECK BY G.C. PRE-FINISHED PBR METAL ROOFING PANELS TO BE FURNISHED BY METAL BUILDING MANUFACTURER
- ⑬ PARKING CANOPY WITH PRIMED STEEL STRUCTURE AND PREFINISHED, UN-INSULATED METAL ROOF PANELS BY METAL BUILDING MANUFACTURER. THE STRUCTURE WILL BE PAINTED BY THE G.C.



MEZZANINE FLOOR PLAN

1/8"=1'-0"



These plans, drawings, and designs are the exclusive property of WPA Architecture and shall not be reproduced in any form without written consent. All rights reserved.

Date: June 10, 2015

Revision: -

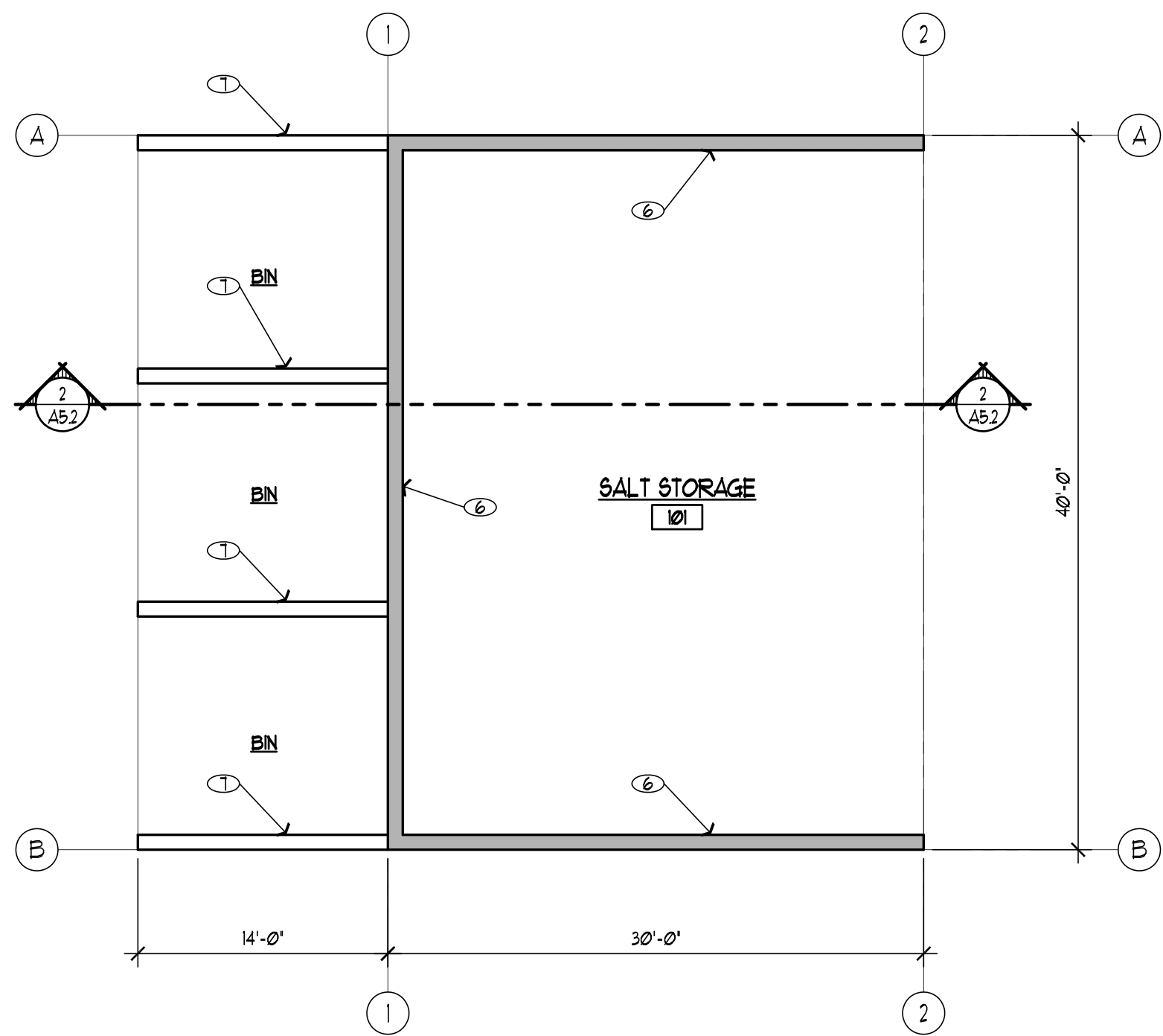
Alan R. Poulson
Ronald B. Jones
Bruce T. Fallon



SANTAQUIN CITY
PUBLIC WORKS FACILITIES
1215 NORTH CENTER STREET SANTAQUIN, UTAH 84655

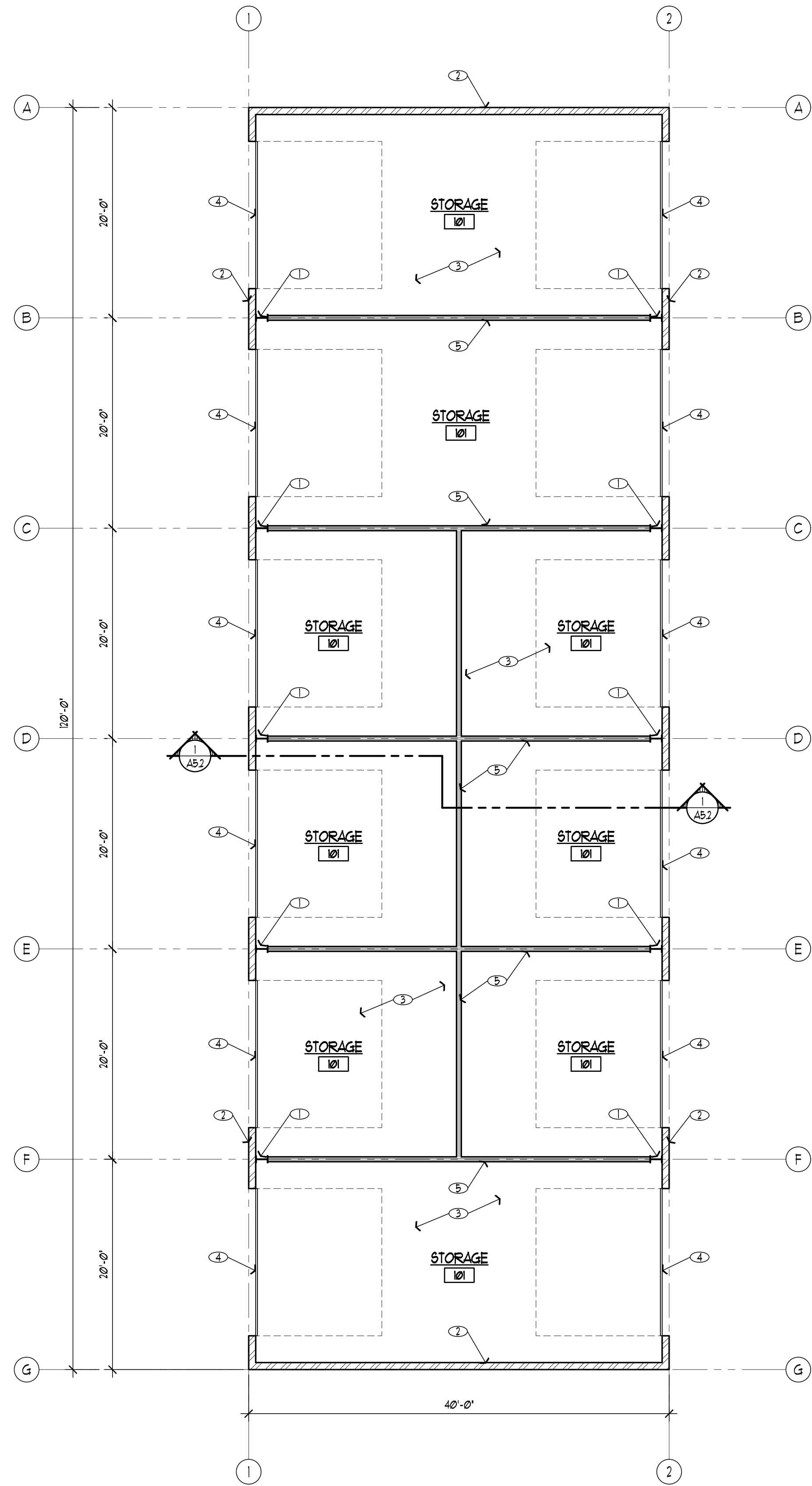
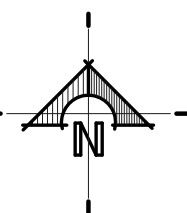


A2.2



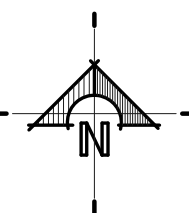
SALT STORAGE BUILDING- FLOOR PLAN

1/8"=1'-0"



STORAGE UNIT BUILDING- FLOOR PLAN

1/8"=1'-0"



SHEET NOTES

- ① STEEL STRUCTURE PROVIDED BY METAL BUILDING MANUFACTURER, TYP.
- ② PRE-FINISHED METAL WALL PANELS OVER METAL WALL STRUCTURE PROVIDED BY METAL BUILDING MANUFACTURER, TYP.
- ③ 4" THICK REINFORCED CONCRETE SLAB OVER GRAVEL WITH CLEAR SEALER, BY G.C.
- ④ 14'-0" x 12'-0" STEEL SECTIONAL OVERHEAD DOOR, PROVIDED BY G.C.
- ⑤ WOOD STUD FRAMED WALL, BY G.C.
- ⑥ CONCRETE FOUNDATION WALLS, BY G.C. (METAL BUILDING STRUCTURE ABOVE WALLS, SEE EXTERIOR ELEVATIONS)
- ⑦ CONCRETE BIN WALLS BY G.C.

These plans, drawings, and designs are the exclusive property of WPA Architecture and shall not be reproduced in any form without written consent. All rights reserved.

Date: June 10, 2015

Revision: -

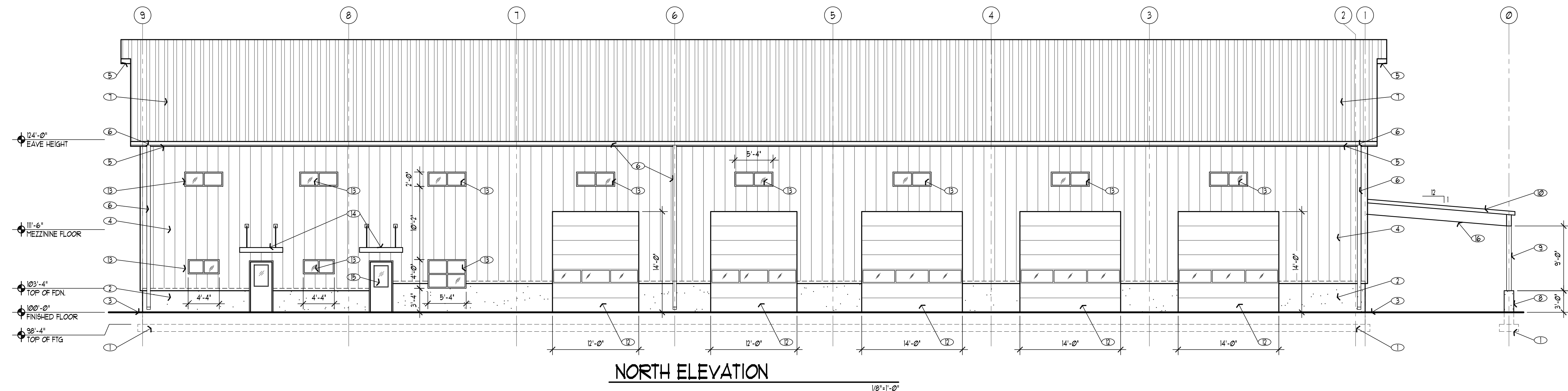
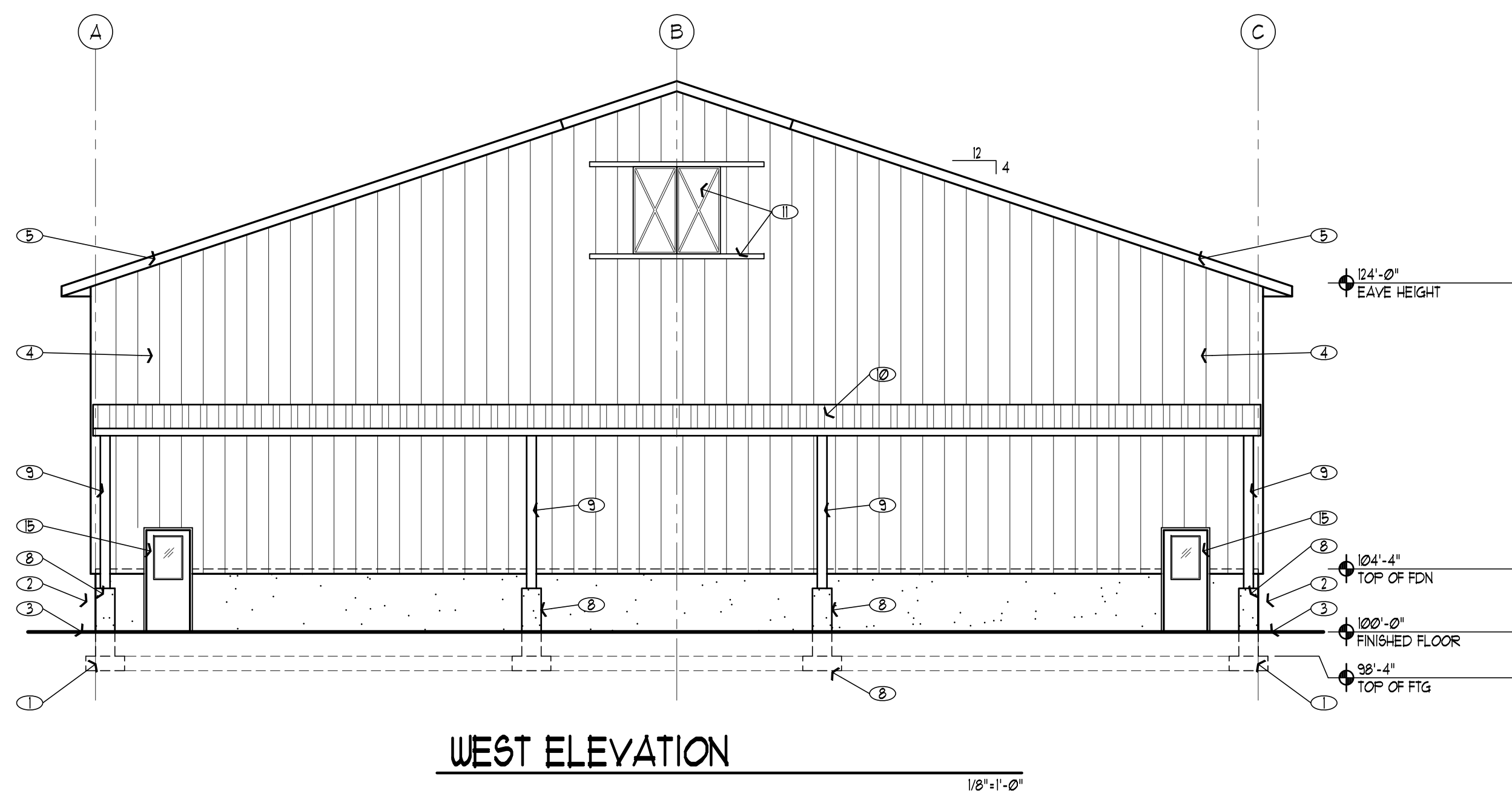
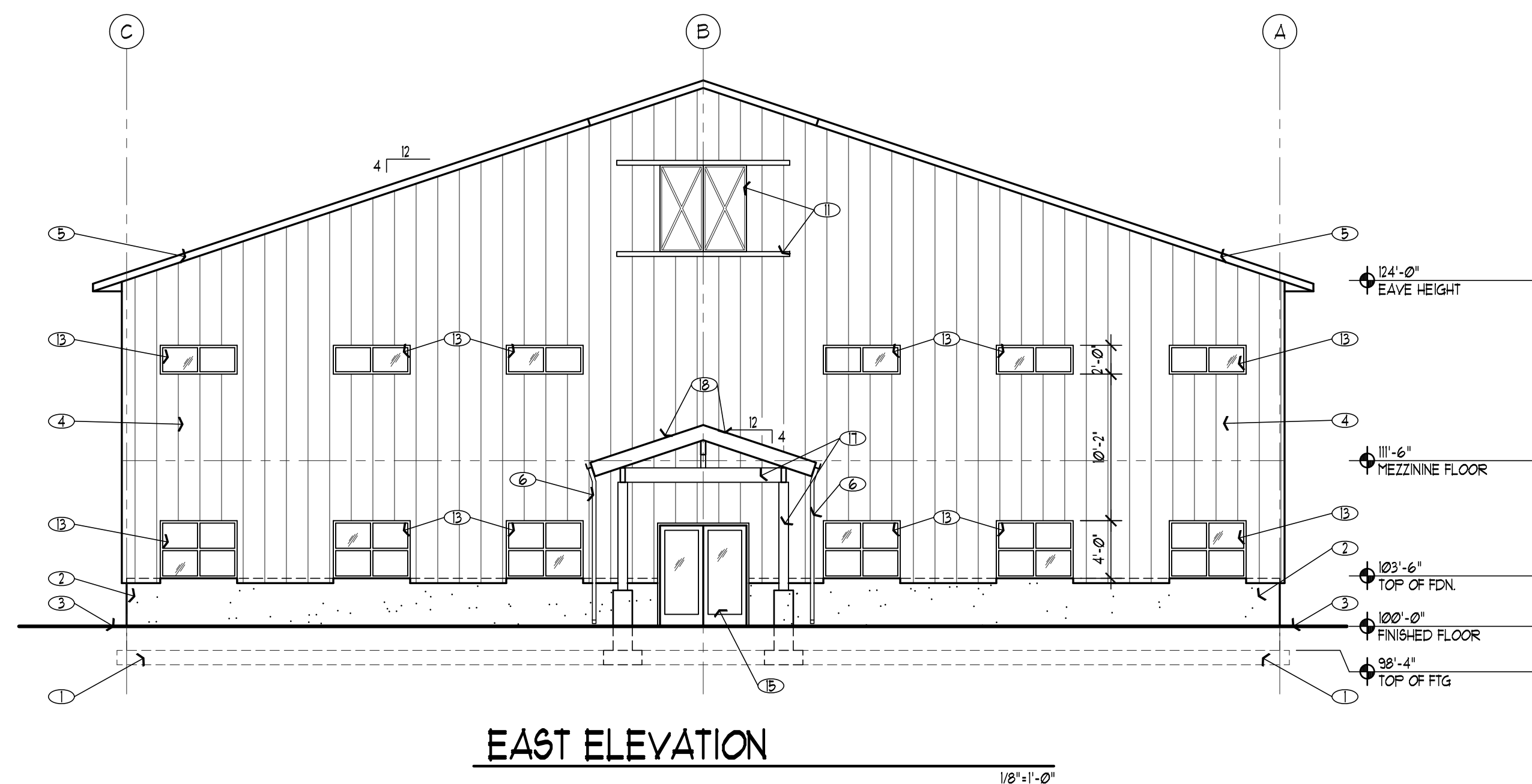
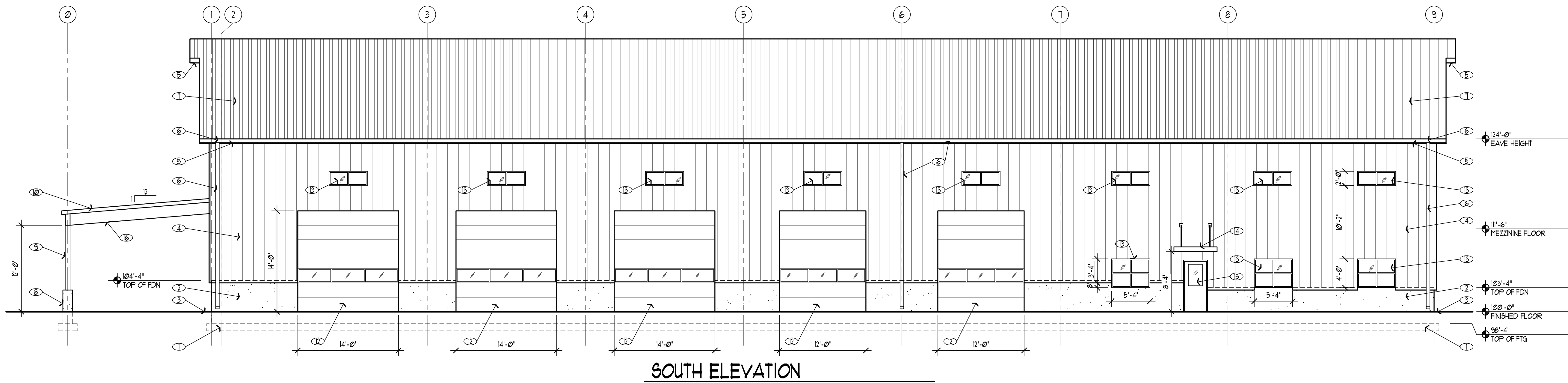
Alan R. Poulson
Ronald B. Jones
Bruce T. Fallon



SANTAQUIN CITY
PUBLIC WORKS FACILITIES
1215 NORTH CENTER STREET SANTAQUIN, UTAH 84655



A2.3



SHEET NOTES

- ① CONCRETE FOOTINGS BY G.C.
- ② CONCRETE FOUNDATION WALL BY G.C.
- ③ FINISH GRADE, SLOPE AWAY FROM STRUCTURE, BY G.C.
- ④ PRE-FINISHED METAL WALL PANELS W/ 4" THICK INSULATED CORE PROVIDED BY METAL BUILDING MANUFACTURER
- ⑤ PRE-FINISHED METAL FASCIA & SOFFIT PROVIDED BY METAL BUILDING MANUFACTURER
- ⑥ PRE-FINISHED METAL RAIN GUTTER AND DOWNSPOUT PROVIDED BY METAL BUILDING MANUFACTURER
- ⑦ PRE-FINISHED METAL ROOF PANELS W/ 4" THICK INSULATED CORE PROVIDED BY METAL BUILDING MANUFACTURER
- ⑧ CONCRETE COLUMN BASE BY G.C.
- ⑨ STEEL COLUMNS PROVIDED BY METAL BUILDING MANUFACTURER
- ⑩ PRE-FINISHED METAL ROOF PANELS OVER METAL ROOF STRUCTURE PROVIDED BY METAL BUILDING MANUFACTURER
- ⑪ FALSE SLIDING DOORS AND TRACKS BY METAL BUILDING MANUFACTURER (TO MATCH EXISTING WRF)
- ⑫ OVER-HEAD SECTIONAL DOOR, PROVIDED BY G.C.
- ⑬ WINDOW PROVIDED BY G.C.
- ⑭ METAL CANOPY AND SUPPORT RODS, BY METAL BUILDING MANUFACTURER
- ⑮ 3'-0" x 7'-0" DOOR, PROVIDED BY G.C.
- ⑯ PRIMARY STEEL FRAME STRUCTURE PROVIDED BY METAL BUILDING MANUFACTURER
- ⑰ WOOD TIMBER ENTRANCE CANOPY, W/ WOOD SHEATHING ROOF DECK BY G.C.
- ⑱ PRE-FINISHED METAL PBR ROOF PANELS FURNISHED BY METAL BUILDING MANUFACTURER

These plans, drawings, and designs are the exclusive property of WPA Architecture and shall not be reproduced in any form without written consent. All rights reserved.

Date: June 10, 2015

Revision: -

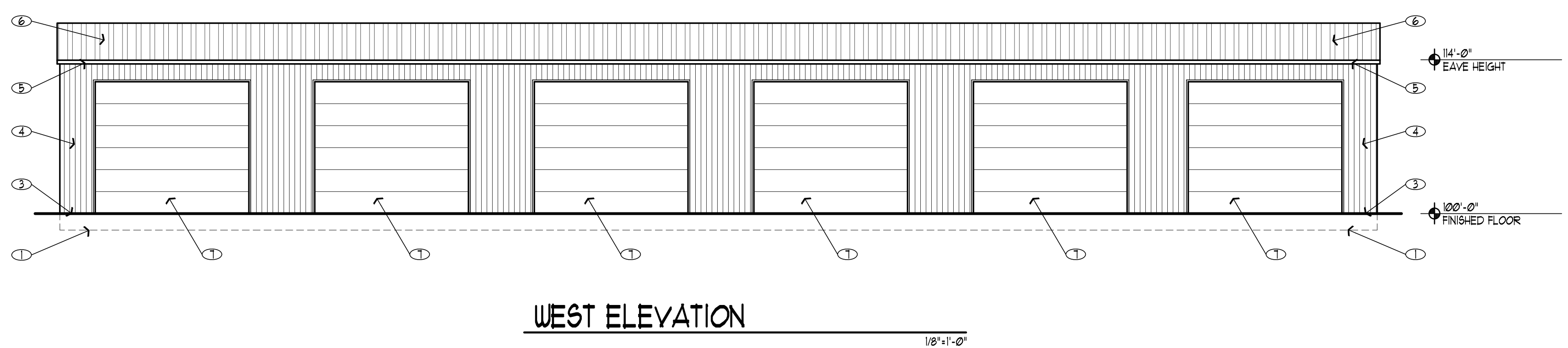
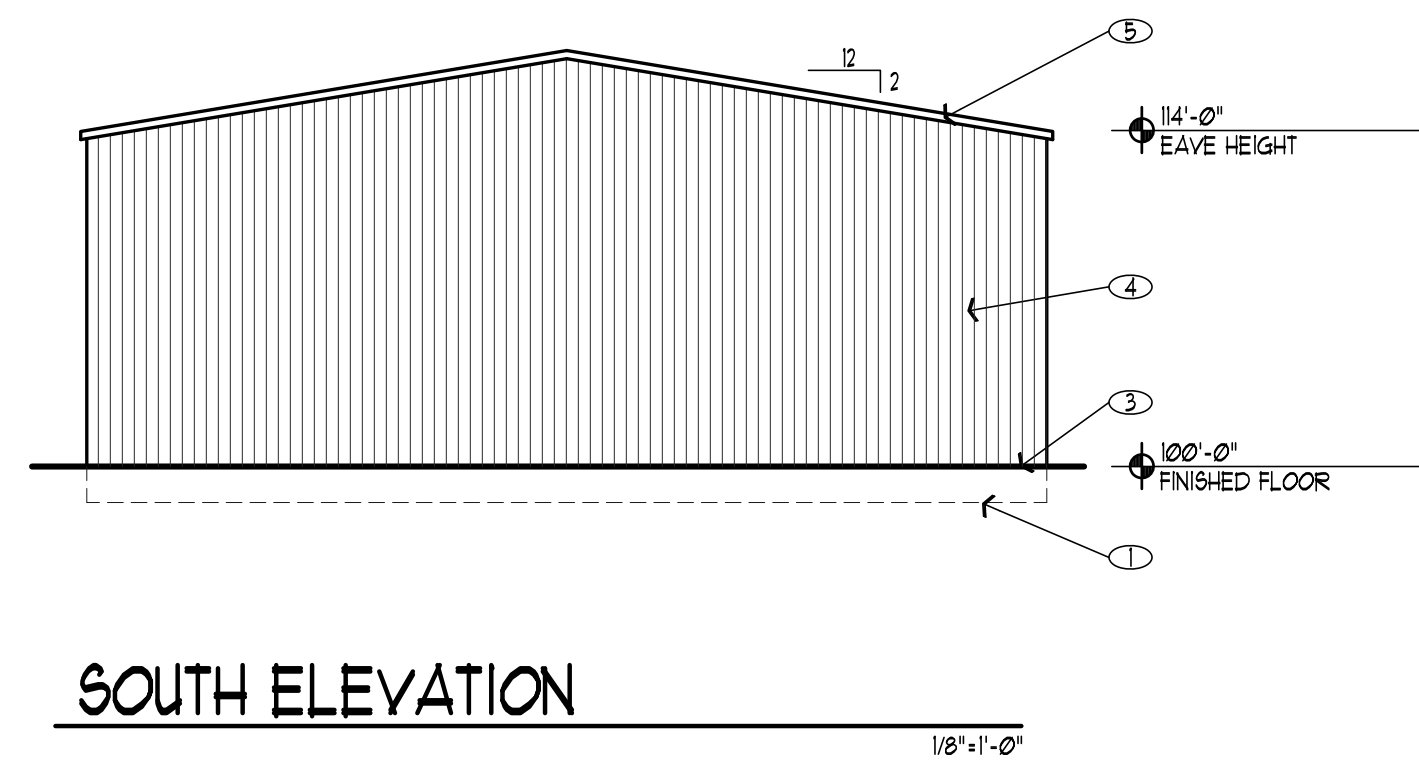
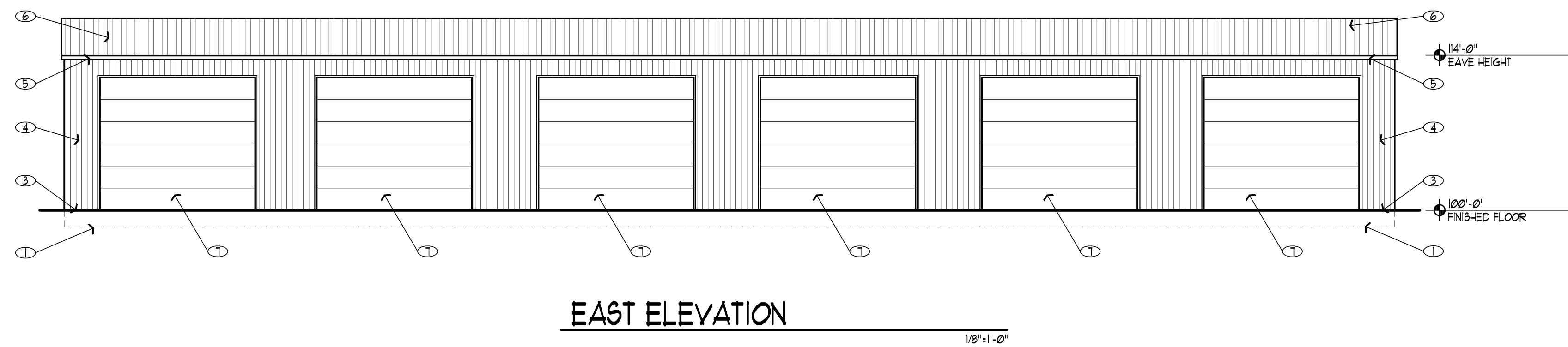
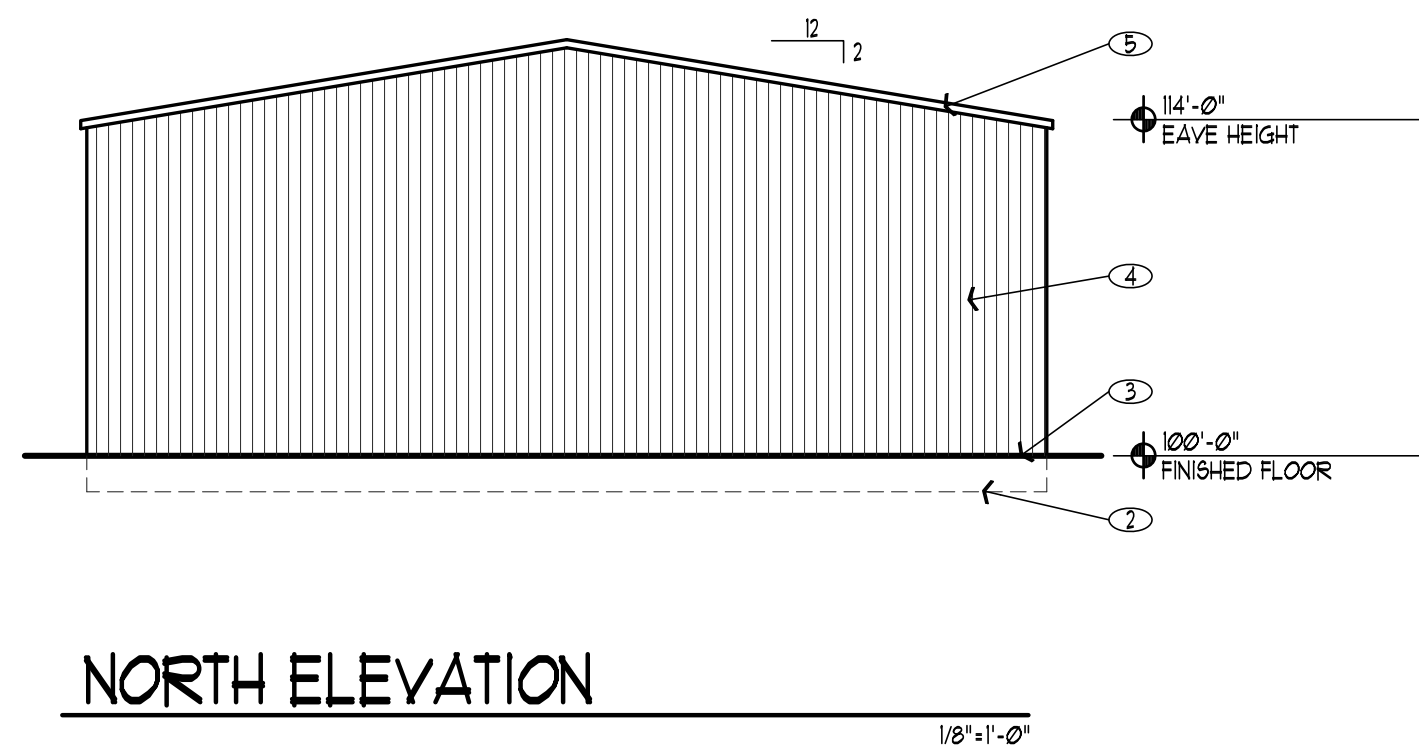
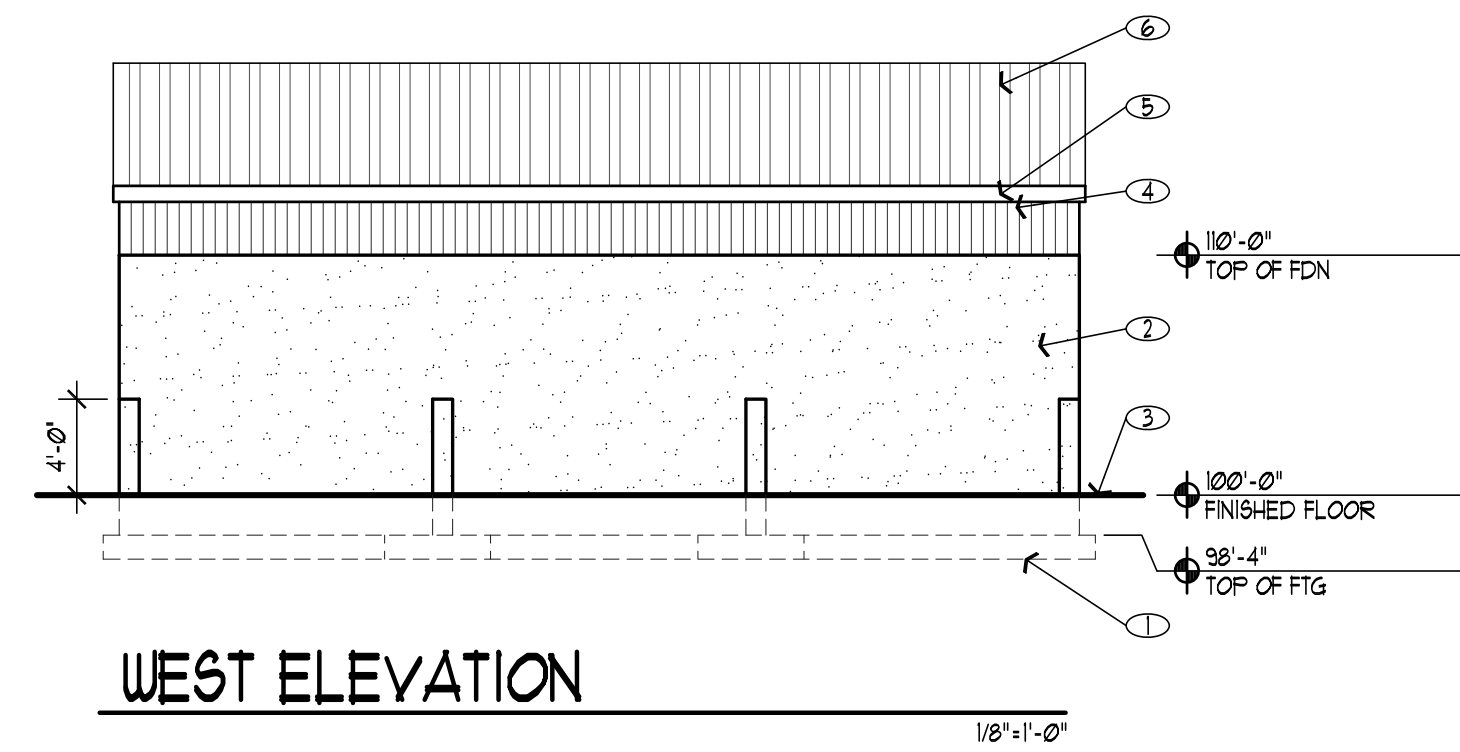
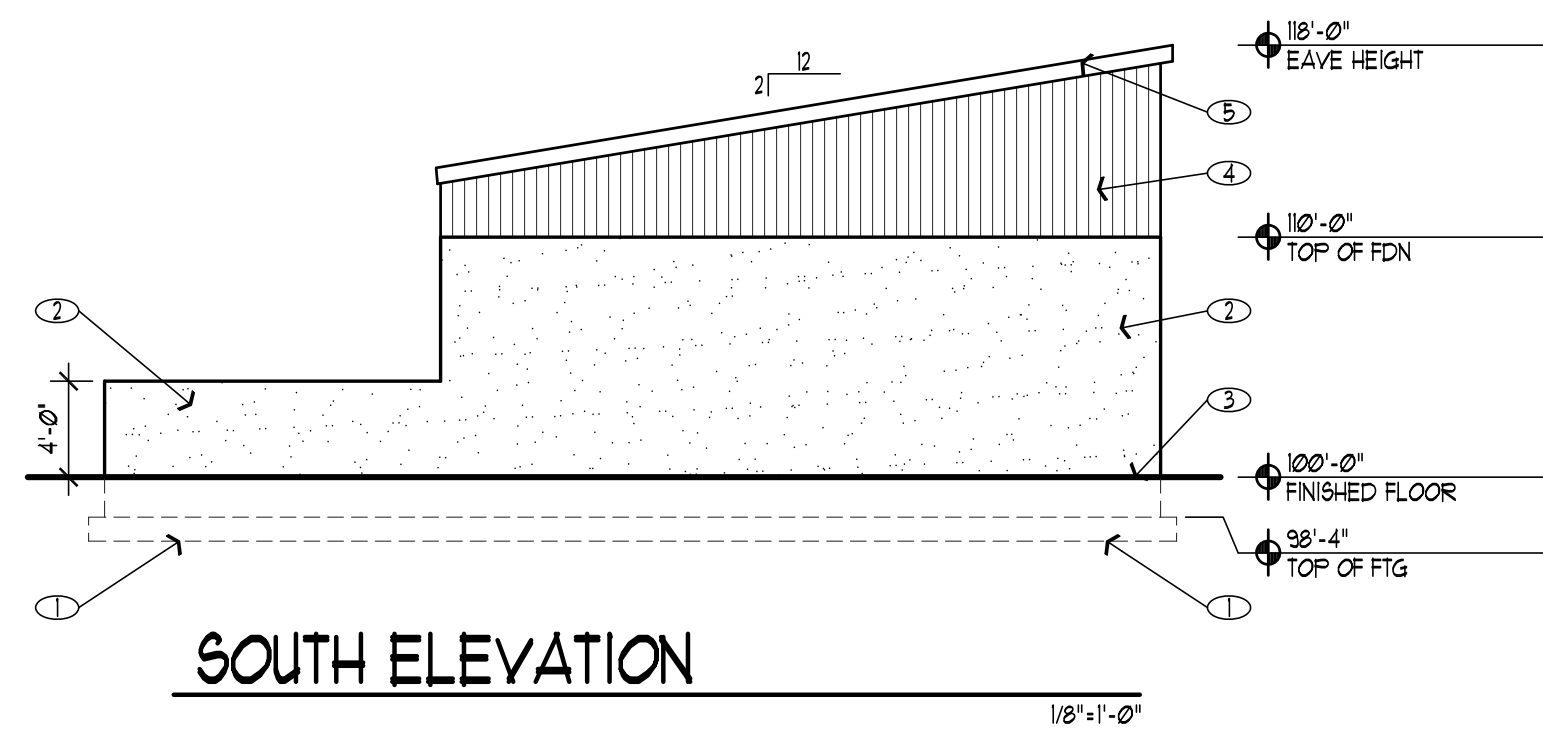
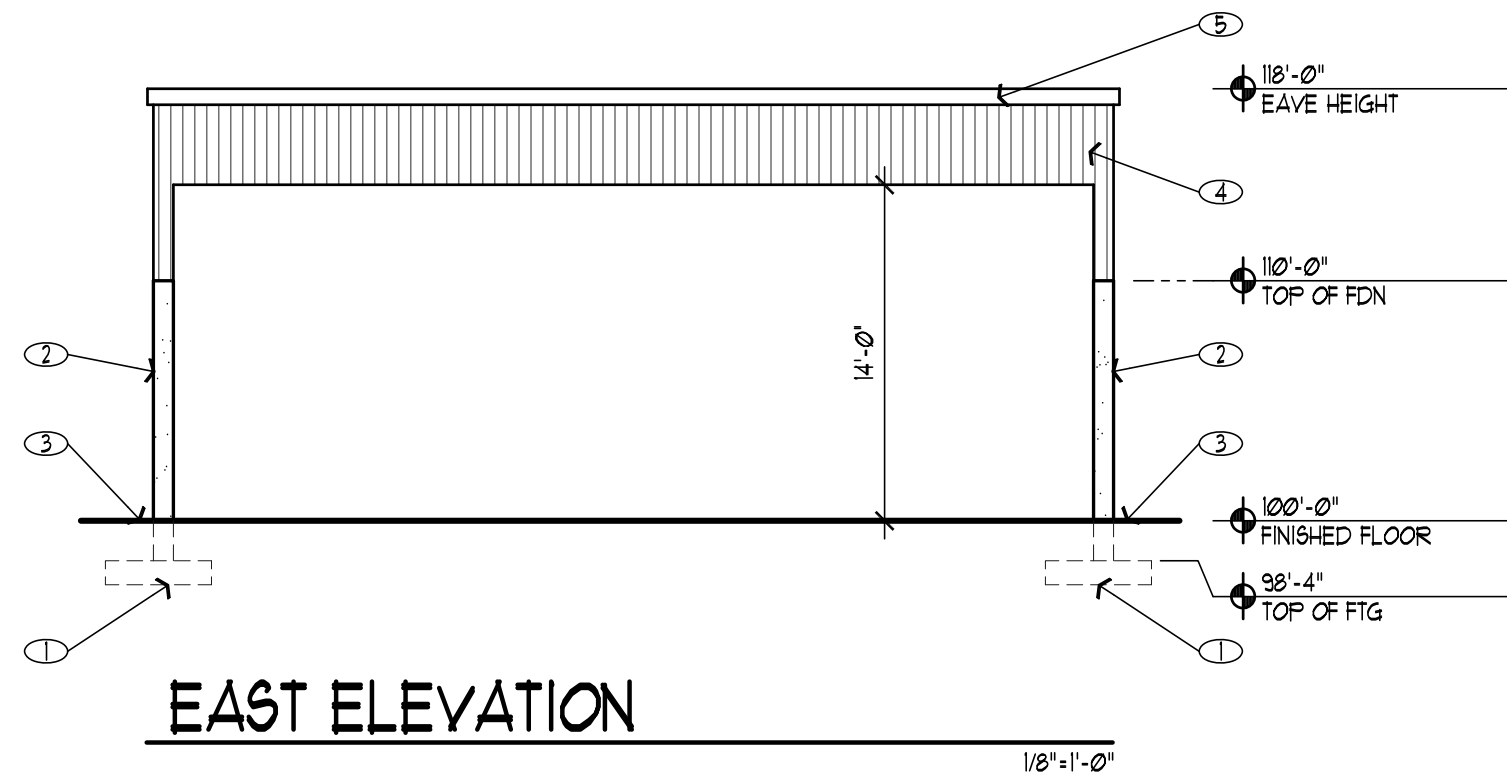
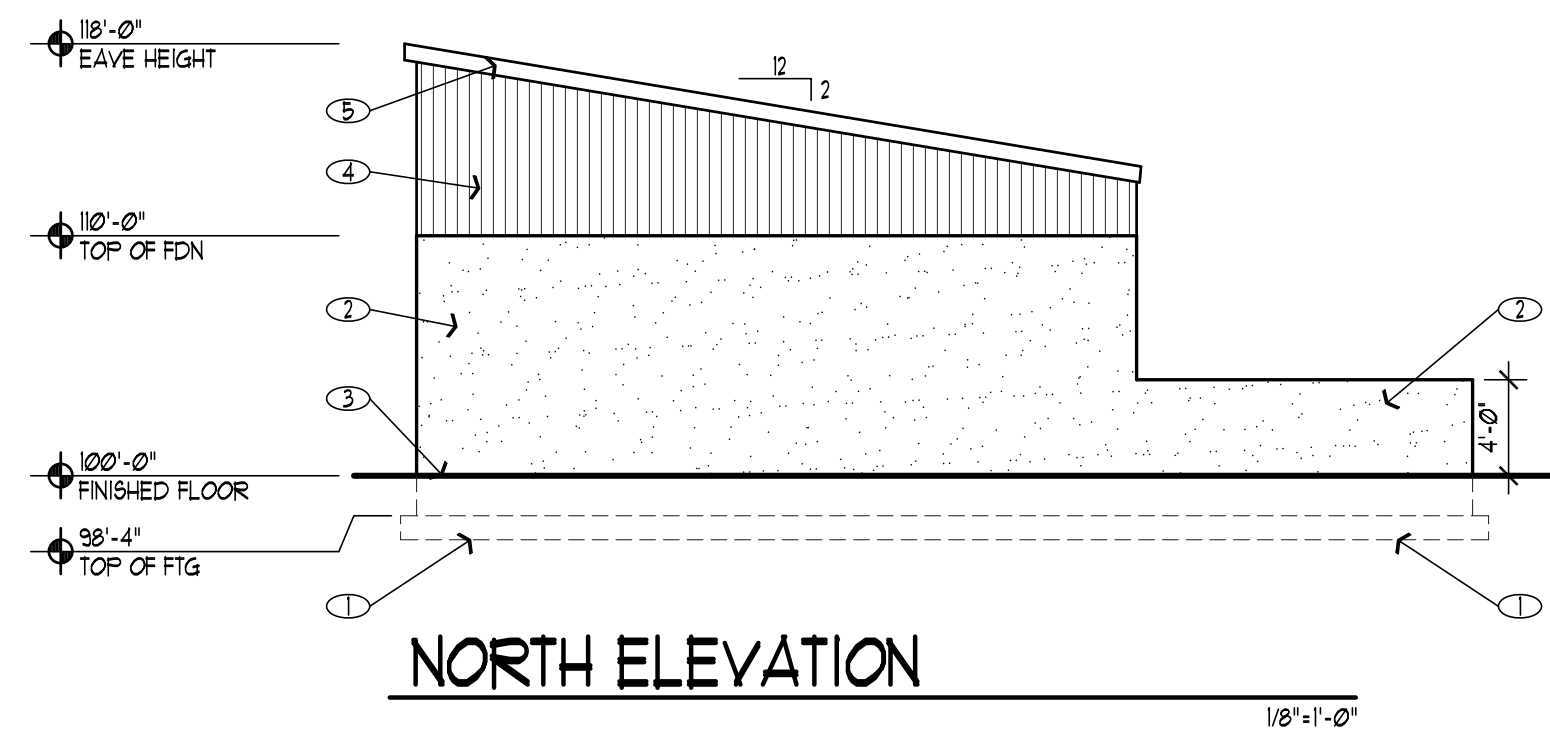
Alan R. Poulson
Ronald B. Jones
Bruce T. Fallon

WPA
architecture
475 North Freedom Blvd.
Provo, Utah 84601
Tel: (801) 374-0800
Fax: (801) 374-0805

SANTAQUIN CITY
PUBLIC WORKS FACILITIES
1215 NORTH CENTER STREET
SANTAQUIN, UTAH 84655

Santaquin
A Division of Fresh Air

A4.1



SHEET NOTES

- ① THICKENED EDGE CONCRETE FOOTING BY G.C.
- ② --- NOT USED ---
- ③ FINISH GRADE, SLOPE AWAY FROM STRUCTURE, BY G.C.
- ④ FIRE-FINISHED METAL WALL PANELS OVER GIRT WALL FRAMING PROVIDED BY METAL BUILDING MANUFACTURER
- ⑤ FIRE-FINISHED METAL FASCIA & SOFFIT PROVIDED BY METAL BUILDING MANUFACTURER
- ⑥ FIRE-FINISHED METAL ROOF PANELS OVER METAL ROOF STRUCTURE PROVIDED BY METAL BUILDING MANUFACTURER
- ⑦ DOOR AND FRAME, BY G.C.

These plans, drawings, and designs are the exclusive property of WPA Architecture and shall not be reproduced in any form without written consent. All rights reserved.

Date: June 10, 2015

Revision: -

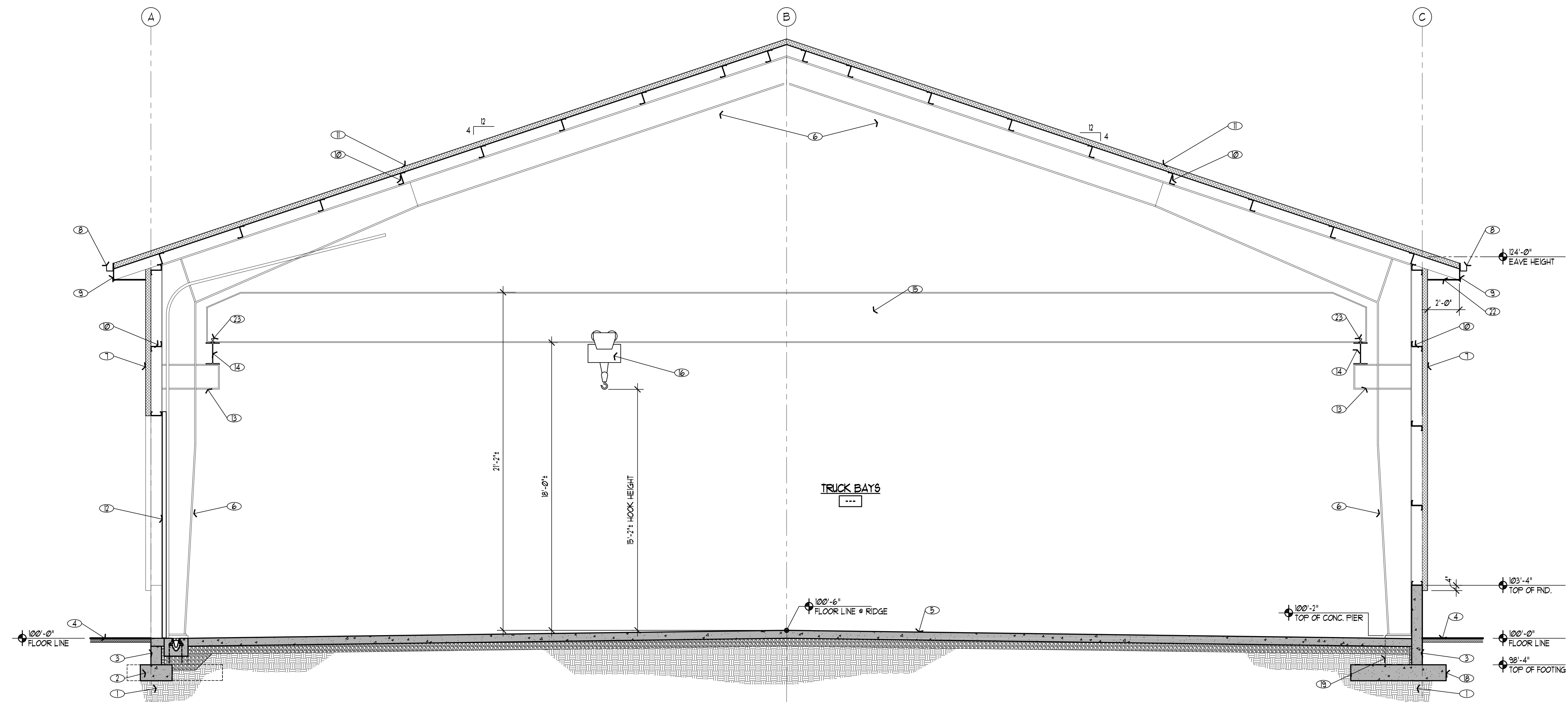
Alan R. Poulsen
Ronald B. Jones
Bruce T. Fallon

WPA
architecture
475 North Freedom Blvd.
Provo, Utah 84601
Tel: (801) 374-0800
Fax: (801) 374-0805

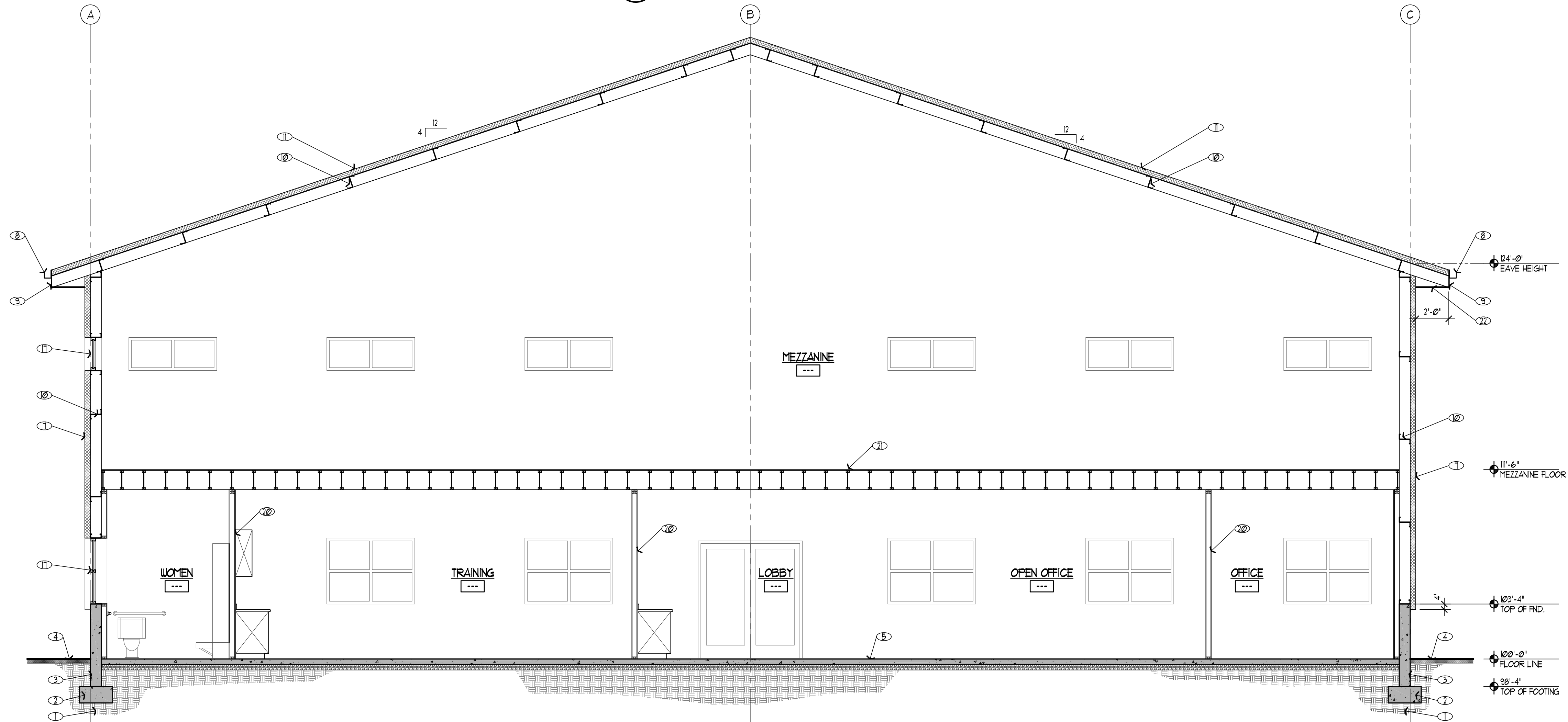
SANTAQUIN CITY
PUBLIC WORKS FACILITIES
1215 NORTH CENTER STREET
SANTAQUIN, UTAH 84655

Santaquin
A Division of Fresh Air

A4.2



1 BUILDING SECTION
1/4"=1'-0"



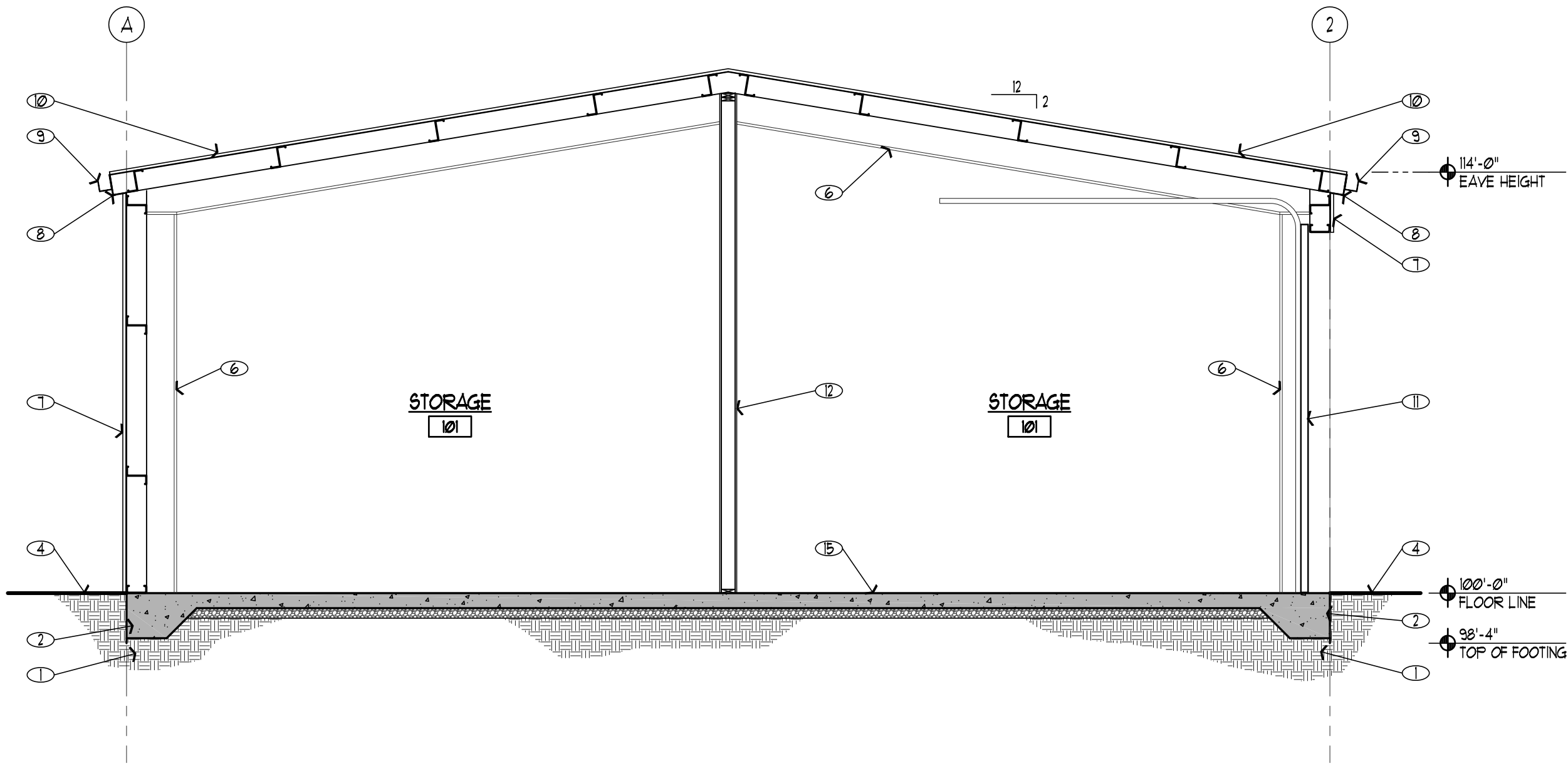
2 BUILDING SECTION
1/4"=1'-0"

SHEET NOTES

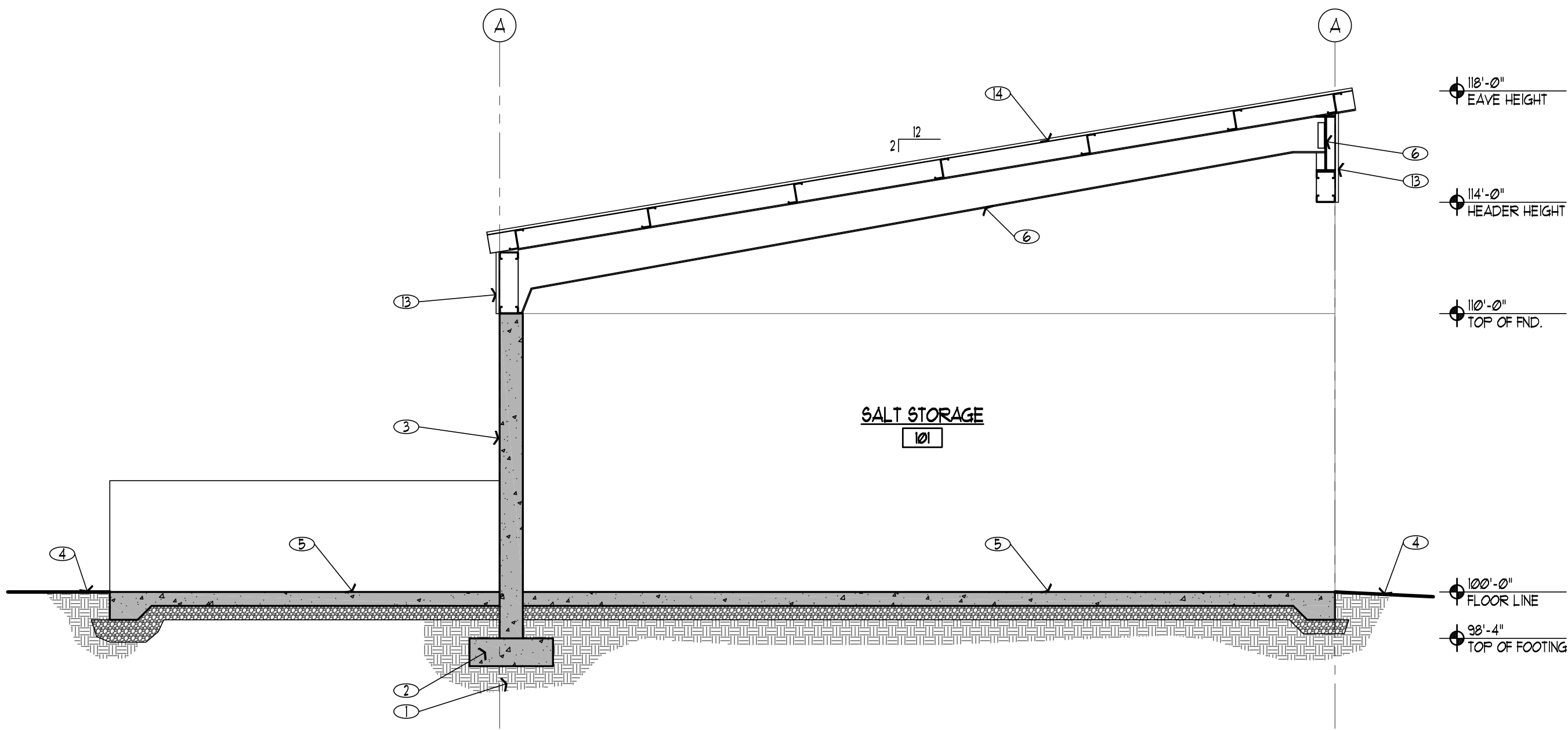
- 1 SOIL PREPARATION PER GEOTECH REPORT
- 2 CONCRETE FOOTING BY G.C.
- 3 CONCRETE FOUNDATION WALL BY G.C.
- 4 FINISH GRADE, SLOPE AWAY FROM STRUCTURE BY G.C.
- 5 6" REINFORCED CONCRETE SLAB (SEALED) OVER 6" COMPACTED GRAVEL BASE BY G.C.
- 6 PRIMARY STEEL FRAME STRUCTURE PROVIDED BY METAL BUILDING MANUFACTURER
- 7 PRE-FINISHED METAL WALL PANELS W/ 4" THICK INSULATED CORE PROVIDED BY METAL BUILDING MANUFACTURER
- 8 PRE-FINISHED METAL RAIN GUTTER & DOWNSPOUTS BY METAL BUILDING MANUFACTURER
- 9 PRE-FINISHED METAL FASCIA BY METAL BUILDING MANUFACTURER
- 10 Z-GIRT FRAMING PROVIDED BY METAL BUILDING MANUFACTURER
- 11 PRE-FINISHED METAL ROOF PANELS W/ 4" THICK INSULATED CORE PROVIDED BY METAL BUILDING MANUFACTURER
- 12 STEEL SECTIONAL OVERHEAD DOOR BY G.C.
- 13 CRANE RAIL SUPPORT BRACKET BY METAL BUILDING MANUFACTURER
- 14 W6x61 RUNWAY BEAM BY METAL BUILDING MANUFACTURER
- 15 BRIDGE RAIL BY CRANE MANUFACTURER
- 16 5-TON CRANE, BY CRANE MANUFACTURER
- 17 WINDOW, PROVIDED BY G.C.
- 18 CONCRETE PIER AT PRIMARY FRAMES, BY G.C.
- 19 CONCRETE FOOTING AT PRIMARY FRAMES
- 20 INTERIOR PARTITIONS BY G.C.
- 21 WOOD FRAMED MEZZANINE FLOOR STRUCTURE BY G.C.
- 22 PREFINISHED METAL SOFFIT BY METAL BUILDING MANUFACTURER
- 23 30" CRANE RAIL, CONNECTIONS, END STOPS, AND CONDUCTOR BY CRANE MANUFACTURER

SHEET NOTES

- 1 SOIL PREPARATION PER GEOTECH REPORT
- 2 THICKENED EDGE CONCRETE FOOTING BY G.C.
- 3 --- NOT USED ---
- 4 FINISH GRADE, SLOPE AWAY FROM STRUCTURE BY G.C.
- 5 6" REINFORCED CONCRETE SLAB (SEALED) OVER 6" COMPACTED GRAVEL BASE BY G.C.
- 6 PRIMARY STEEL FRAME STRUCTURE PROVIDED BY METAL BUILDING MANUFACTURER
- 7 PRE-FINISHED METAL WALL PANELS OVER Z-GIRT FRAMING, PROVIDED BY METAL BUILDING MANUFACTURER
- 8 PRE-FINISHED METAL FASCIA, PROVIDED BY METAL BUILDING MANUFACTURER
- 9 PRE-FINISHED METAL RAIN GUTTER 4 DOWNSPOUTS BY METAL BUILDING MANUFACTURER
- 10 PRE-FINISHED METAL ROOF PANELS OVER Z-GIRT FRAMING, PROVIDED BY METAL BUILDING MANUFACTURER
- 11 STEEL SECTIONAL OVERHEAD DOOR BY G.C.
- 12 STUD FRAMED WALL, BY G.C.
- 13 PRE-FINISHED METAL WALL PANELS OVER GALVANIZED STRUCTURAL STEEL FRAMING, PROVIDED BY METAL BUILDING MANUFACTURER
- 14 PRE-FINISHED METAL ROOF PANELS OVER GALVANIZED STRUCTURAL STEEL FRAMING, PROVIDED BY METAL BUILDING MANUFACTURER
- 15 4" CONCRETE SLAB OVER 6" ROAD BASE



1 BUILDING SECTION- STORAGE BLDG
1/4" = 1'-0"



2 BUILDING SECTION- SALT STORAGE
1/4" = 1'-0"

These plans, drawings, and designs are the exclusive property of WPA Architecture and shall not be reproduced in any form without written consent. All rights reserved.

Date: June 10, 2015

Revision: -

Alan R. Poulson
Ronald B. Jones
Bruce T. Fallon

WPA
architecture
475 North Freedom Blvd.
Provo, Utah 84601
Tel: (801) 374-0800
Fax: (801) 374-0805

SANTAQUIN CITY
PUBLIC WORKS FACILITIES
1215 NORTH CENTER STREET
SANTAQUIN, UTAH 84655



A5.3