

NOTICE

Notice is hereby given that the Mayor and City Council will hold a Work Session on February 15, 2012 in the Council Chambers, 45 West 100 South, beginning at 6:00 pm.

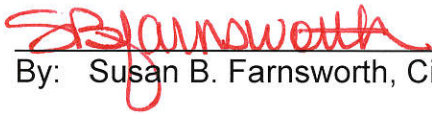
DISCUSSION ITEMS

1. City Council Meeting Agenda Items
2. Construction Standards
3. General Discussion

If you are planning to attend this Public Meeting and, due to a disability, need assistance in understanding or participating in the meeting, please notify the City Office ten or more hours in advance and we will, within reason, provide what assistance may be required.

CERTIFICATE OF MAILING

The undersigned duly appointed City Recorder for the municipality of Santaquin City hereby certifies that a copy of the foregoing Notice and Agenda was e-mailed to the Payson Chronicle, Payson, UT, 84651.



By: Susan B. Farnsworth, City Recorder

Posted:

City Offices

Post Office

Zions Bank

**MINUTES OF A COUNCIL WORK SESSION
HELD IN THE COUNCIL CHAMBERS
FEBRUARY 15, 2012**

The meeting was called to order by Mayor James E. DeGraffenried at 6:02 pm. Council Members attending: Matthew Carr, James Linford, Richard Payne, and Rich Steele. Keith Broadhead arrived at 6:32.

Others attending: Community Development Director Dennis Marker, Public Works Director Wade Eva, Infrastructure Inspector Jared Shepherd, Sunrise Engineering Representatives Robert Worley and Jesse Ralphs, Scout Troop 1584 Members, Brent Norton, Spencer Healey, Allan Thompson, Doug Rohbock, and other unidentified individuals.

DISCUSSION ITEMS

City Council Meeting Agenda Items

Mr. Worley reported Sunrise began a design to change the use of the Eastside Water Tank. There were 6 bids received pertaining to the project ranging from \$121,330.19 to 171,000. The Engineer estimate of the project is \$124,075 which is within the range. Terry Brotherson, Brotherson Excavating submitted the low bid. Mr. Worley reported they have worked with this contractor many times and recommend this contractor very highly.

Director Eva reported he has reviewed the documents pertaining to the project and feels comfortable working with this contractor.

The project will take approximately 75 days to complete after the bonds are in place, with the completion date scheduled for the end of May.

As there were no additional questions, the Sunrise Engineering Representatives were excused.

Director Marker reported the adjustment of the EMS Boundaries to the North is finally complete. He reviewed the boundaries changes on a map for those in attendance. He indicated the boundaries include the Northeast Annexation. The new boundaries clean up some of the "service times" with regard to which agency can arrive the quickest to begin patient care.

No additional discussion on the boundaries took place.

Director Marker passed the Mayor and Council Members information pertaining to each of the previously discussed park projects. He reviewed the plans for a proposed restroom facility. The estimated construction cost would be \$25,000. The cost of maintaining the current restroom facilities that the City has would be approximately \$3,562; with the proposed restroom at Summit Ridge included it would be approximately \$4,408. It was reiterated that if there are additional parks included there will be a need for additional man-power to maintain them. It was reported the cost to install security cameras would be approximately \$25,000 for installation of the system,

\$2,000 per camera and \$5,000 for any new cameras installed after the initial installation.

Council Member Carr was told the Park Impact Fees cannot be spent to resurface the current tennis court. The posts are not up to par which causes a problem with the netting being kept in place.

Council Member Linford was told for every acre of park additional maintenance is approximately \$2,300. There was a suggestion made to add an outdoor volleyball area which would eliminate some of the grass area.

Council Members will make their comments in the regular meeting.

Construction Standards

Infrastructure Inspector Shepherd reviewed the cost difference between requiring steel poles instead of fiberglass poles. He also reviewed differences in the fixtures. (see attachment "A" for the information given to the Mayor and Council Members)

Council Member Steele requested a cost estimate for painting/maintaining the fiberglass poles.

Council Member Broadhead indicated he had reviewed the proposed standards and did not have any issues with them except with the light pole requirements.

The Council Members were asked to e-mail any questions or comments to Director Marker before the next meeting.


General Discussion

No time was available for a general discussion.

The meeting adjourned at 6:55 pm.

Approved on March 7, 2012.


James E. DeGraffenried, Mayor


Susan B. Farnsworth, City Recorder

Jared Shepherd

From: Ted Maestas <ted@mountainstateslighting.com>
Sent: Wednesday, February 15, 2012 4:03 PM
To: Jared Shepherd
Subject: FW: Street Lights

Importance: High

From: Ted Maestas [<mailto:ted@mountainstateslighting.com>]
Sent: Wednesday, February 15, 2012 4:00 PM
To: 'jsheperd@santaquin.org'
Subject: Street Lights
Importance: High

Jared,

Keep in mind that you have not bought any of these products since 2008, so the prices below reflect not only differences, but also they reflect the price increases from 2008.

Residential Pole(no decorative base included);

- Right now you are using a 16OH/12AG fiberglass direct burial – Current price on this is \$305.00
- If you went to steel on this pole it would be approx \$345.00
- If you went to aluminum, it would be approximately the same price as steel, but not nearly as strong, and we have the fear of "Hot" soils.
- These are direct burial poles, to go to anchor plate types would add on these pole about \$50.00

Residential Fixture;

- Right now you have a 70HPS acrylic top cut-off vertical ribbed fixture, with HSS for Type 3 - Current price is \$650.00 with lamp
- If you went to LED cutoff type 3, we would need to put a solid top on it and a cage for LED support – Price in 40 LED would be \$ 1150.00

I am thinking that the TX03 would work great. You could go to a non cutoff 40 LED for \$990.00.

Collector Pole(no decorative base included);:

- Right now you are using a 14' Fluted aluminum Pole with Anchor base – Current price is \$ 625.00
- In this case steel is the same price for a fluted pole.
- To go to direct burial would be the same price in this case, because of the cost per foot for fluted shafts, but there would be some big savings in the foundation, even if you use a mow strip.

Collector Fixture;

- Right now you have a 150HPS Solid top cut-off vertical ribbed fixture, with HSS for Type 3 - Current price is \$660.00 with lamp
- If you went to LED cutoff type 3, we would keep the solid top on it and a cage for LED support – Price in 80 LED would be \$ 1250.00

I am thinking that the TX03 would work great. You could go to a non cutoff 80 LED for \$1100.00.

My suggestion if you want to make some changes would be to go to a solid top on the Residential, and our steel tapered pole that we are using everywhere. As long as you want cutoff down there, we are set with the higher prices on the LED fixtures. It have the same look, but you could go with the UX1 fixture in the residential areas and get the pricing down to \$975 in the residential areas which is a \$325.00 adder over what you have now. For the collectors you could go to direct burial, which will save big on a foundation. For you to go to a non-fluted pole for the collectors means that this would not match the fluted pole on the commercial stuff. In terms of fixtures for collectors, we could look at the 64 LED TX03, which could get this fixture down to \$1200.00, this would be a \$540.00 adder over what you have now.

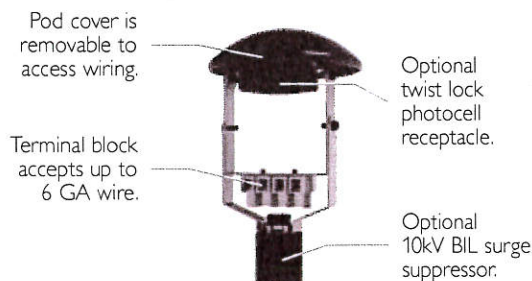
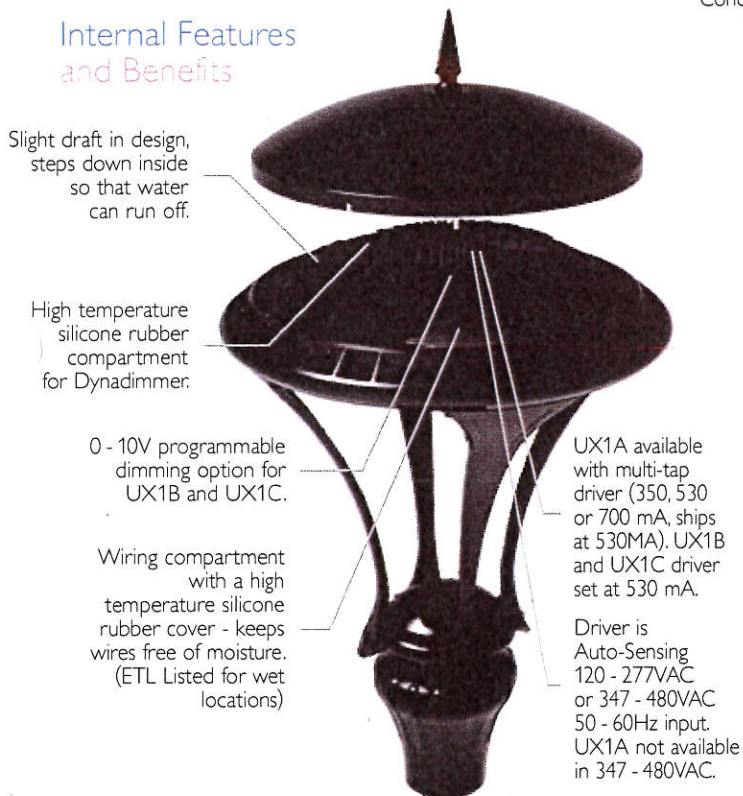
Thanks,

Ted Maestas
Regional Manager
Mountain States Lighting
Office: 801-268-4879
Mobile: 801 673- 5289
email: ted@mountainstateslighting.com

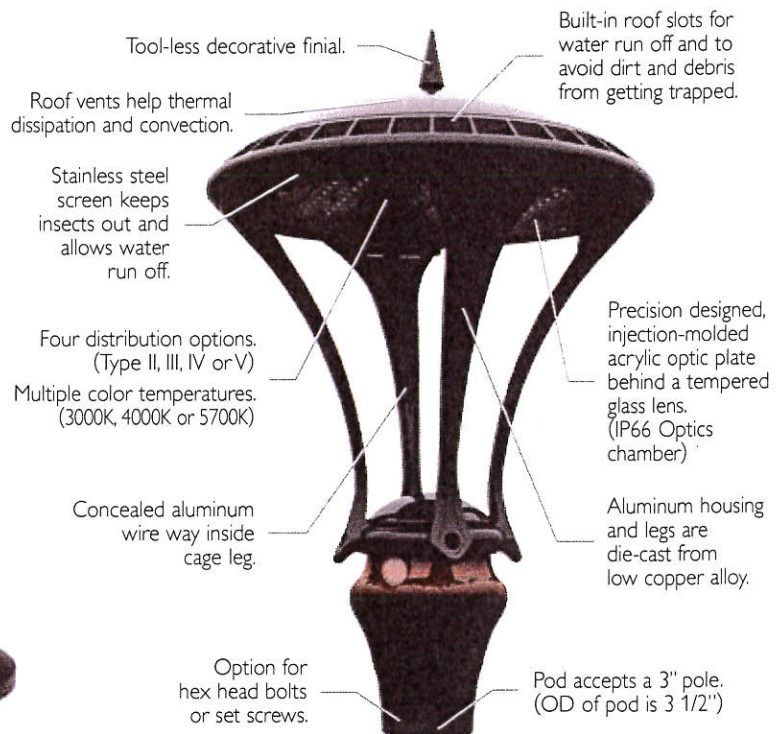
Product Description

The new Philips Hadco UX1 decorative post top is an excellent solution for LED outdoor lighting. The UX1 uses the Philips LEDGINE platform which maximizes energy savings and provides uniform and comfortable white light. The low copper, die cast aluminum housing has a modern design with traditional features and benefits. The design and performance work in several applications including residential streets, city streets, campuses, parking lots and retail centers. The UX1 is a great solution for new installations or replacing a variety of HID sources.

Internal Features and Benefits



External Features and Benefits



UX1 Specifications

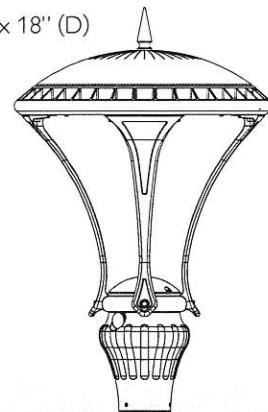
UX1

Dimensions - 28.1" (L) x 18" (D)

Weight - 25 lbs

EPA - 0.45

Vibration Tested for
Normal Application
ANSI C 136.31



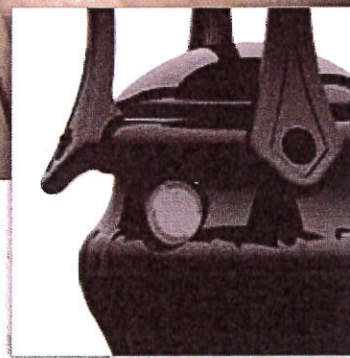
PHILIPS
HADCO

www.hadco.com

100 Craftway Drive, P.O. Box 128, Littlestown, PA 17340
Phone: 1-866-423-2658 • Fax: 717-359-0618

Printed in U.S.A. PH-1074-1106-PDF

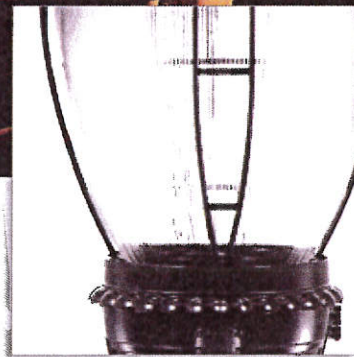
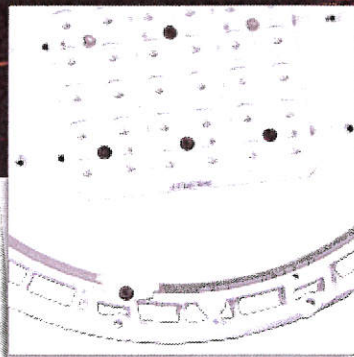
Full specification sheets, IES files and ordering guide information can be found at www.hadco.com.



UX1 LEDGINE LED Decorative Post Top

Learn more about Philips Hadco Luminaires at Hadco.com.

PHILIPS
HADCO
sense and simplicity



Philips Hadco's TX03 LEDGINE LED Decorative Post Top

Learn more about Philips Hadco's Post Top LED Luminaires at hadco.com.

PHILIPS
HADCO
sense and simplicity

Product Description

Philips Hadco's Optical Rib Technology (ORT) is the ideal way to achieve the wide dispersion of light needed for most outdoor applications. This highly efficient technology evenly disperses light for more uniform coverage while virtually eliminating glare. Our Optical Rib globe is designed to shed water and dirt, lowering maintenance costs, while obscuring the luminaire's internal

components to help maintain the aesthetics of your project.

Optical Rib Technology

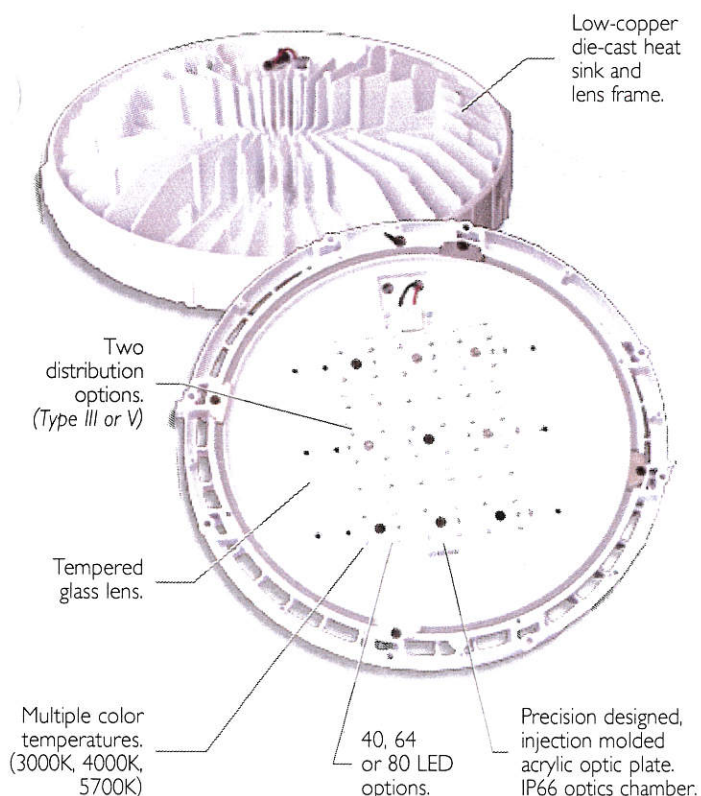
"ORT"

Optical Rib Technology, advanced light control:

Distributes light for more uniform coverage with significantly less glare. Highly efficient.



Internal Features and Benefits

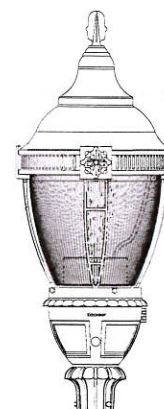


TX03 Specifications



TX03 shown: (B) Pod
(A) Finial

Weight - 37 lbs
EPA - 1.7 sq. ft.



PHILIPS
HADCO

Full specification sheets and ordering guide information can be found at www.hadco.com.

www.hadco.com
100 Craftway Drive, P.O. Box 128, Littlestown, PA 17340
Phone: 1-866-423-2658 • Fax: 717-359-0618
Printed in U.S.A. PH-1117-1109-15H